



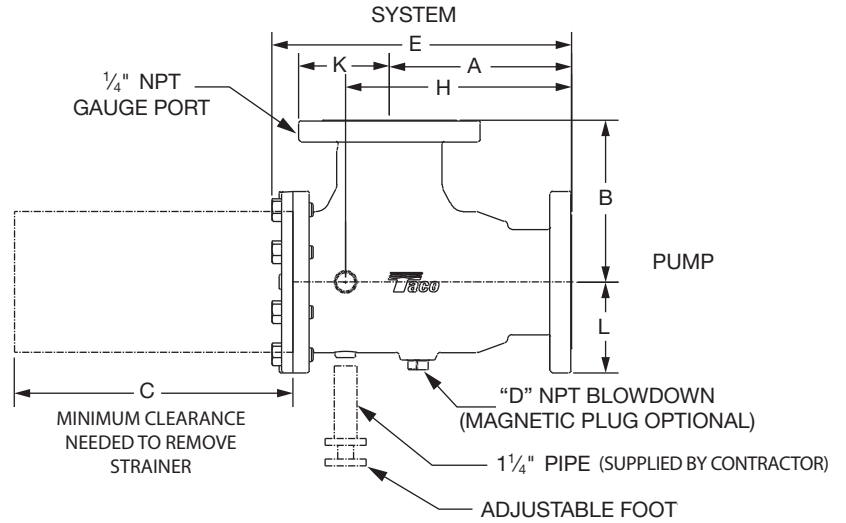
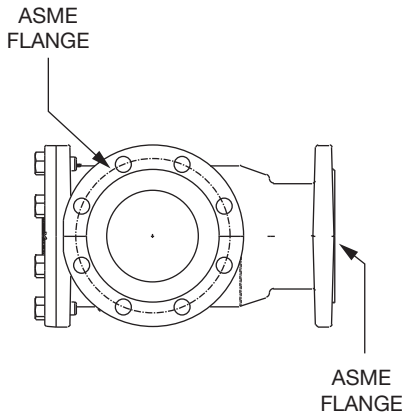
# SUCTION DIFFUSER REAR STRAINER PULLOUT (RSP)

Submittal

Job \_\_\_\_\_ Contractor \_\_\_\_\_ Item no. \_\_\_\_\_

Engineer \_\_\_\_\_ Rep. \_\_\_\_\_ Model no. \_\_\_\_\_

### Dimensions



NOTE: Dimensions are in inches. Metric dimensions are in millimeters and are in parentheses ( ). Weights are in lb (kg). 'C' is the distance required to replace strainer.

All Class 125/150 on revision level -5 have a Raised Face. -6 indicates products with Flat Face



# SUCTION DIFFUSER REAR STRAINER PULLOUT (RSP) (CONTINUED)

Submittal

Job \_\_\_\_\_ Contractor \_\_\_\_\_ Item no. \_\_\_\_\_

Engineer \_\_\_\_\_ Rep. \_\_\_\_\_ Model no. \_\_\_\_\_

**Connection Flange: ANSI 125/150**

Model Number	System NPS	Pump NPS	Cv	Free Area (sq. in.)	A in (mm)	B in (mm)	C in (mm)	D NPT	E in (mm)	H in (mm)	K in (mm)	L in (mm)	Weight lb (kg)
SD020015-5	2	1-1/2	54	21	5.69 (145)	5.39 (137)	8.49 (216)	3/4	9.25 (235)	6.92 (176)	3.00 (076)	2.5 (64)	22 (10)
SD020020-5	2	2	106	21	5.44 (138)	5.39 (137)	8.24 (209)	3/4	9.00 (229)	6.67 (169)	3.00 (076)	3.00 (76)	24 (11)
SD025020-5	2 1/2	2	106	21	5.44 (138)	5.39 (137)	8.24 (209)	3/4	9.00 (229)	6.67 (169)	3.50 (089)	3.00 (76)	27 (12)
SD030020-5	3	2	106	21	5.44 (138)	5.39 (137)	8.24 (209)	3/4	9.00 (229)	6.67 (169)	3.75 (095)	3.00 (76)	29 (13)
SD025025-5	2-1/2	2-1/2	135	24	6.06 (154)	6.01 (153)	8.97 (228)	3/4	9.83 (250)	7.41 (188)	3.50 (089)	3.50 (89)	38 (17)
SD030025-5	3	2-1/2	135	24	6.06 (154)	6.01 (153)	8.97 (228)	1	9.83 (250)	7.41 (188)	3.75 (095)	3.50 (89)	38 (17)
SD040025-5	4	2-1/2	135	24	6.07 (154)	8.45 (215)	8.97 (228)	3/4	8.93 (227)	7.59 (193)	4.43 (113)	3.50 (89)	52 (24)
SD030030-5	3	3	220	35	6.86 (174)	6.56 (167)	10.47 (266)	1	11.41 (290)	8.32 (211)	3.75 (095)	3.75 (95)	50 (23)
SD040030-5	4	3	220	35	6.86 (174)	6.56 (167)	10.47 (266)	1	11.41 (290)	8.32 (211)	4.50 (114)	3.75 (95)	55 (25)
SD050030-5	5	3	220	35	6.86 (174)	8.94 (227)	10.47 (266)	1	11.41 (290)	8.51 (216)	4.93 (125)	3.75 (95)	65 (29)
SD040040-5	4	4	380	64	7.94 (202)	8.45 (215)	12.86 (327)	1	13.96 (355)	10.29 (261)	4.50 (114)	4.50 (114)	73 (33)
SD050040-5	5	4	380	64	7.94 (202)	8.45 (215)	12.86 (327)	1	13.96 (355)	10.29 (261)	5.00 (127)	4.50 (114)	75 (34)
SD060040-5	6	4	380	64	7.94 (202)	8.45 (215)	12.86 (327)	1	13.96 (355)	10.29 (261)	5.50 (140)	4.50 (114)	79 (36)
SD050050-5	5	5	669	100	10.06 (256)	8.94 (227)	15.36 (390)	1	16.54 (420)	12.48 (317)	5.00 (127)	5.00 (127)	90 (41)
SD060050-5	6	5	669	100	10.06 (256)	8.94 (227)	15.36 (390)	1	16.54 (420)	12.48 (317)	5.50 (140)	5.00 (127)	96 (44)
SD080050-5	8	5	669	100	10.06 (256)	13.21 (336)	15.36 (390)	1	16.54 (420)	12.67 (322)	6.68 (170)	5.00 (127)	151 (68)
SD060060-6	6	6	985	146	11.58 (294)	11.17 (284)	19.02 (483)	1	20.39 (518)	16.17 (411)	5.50 (140)	5.50 (140)	151 (68)
SD080060-5	8	6	985	146	11.58 (294)	11.17 (284)	19.02 (483)	1	20.39 (518)	16.17 (411)	6.75 (171)	5.50 (140)	170 (77)
SD100060-5	10	6	985	146	11.58 (294)	11.17 (284)	19.02 (483)	1	20.39 (518)	16.17 (411)	8.0 (203)	5.50 (140)	182 (83)
SD080080-5	8	8	1657	248	14.43 (367)	13.21 (336)	23.79 (604)	1	25.32 (643)	20.22 (514)	6.75 (171)	6.75 (171)	271 (123)
SD100080-5	10	8	1657	248	14.43 (367)	13.21 (336)	23.79 (604)	1	25.32 (643)	20.22 (514)	8.0 (203)	6.75 (171)	284 (129)
SD120080-5	12	8	1657	248	14.43 (367)	13.21 (336)	23.79 (604)	1	25.32 (643)	20.22 (514)	9.50 (241)	6.75 (171)	305 (138)
SD100100-5	10	10	2650	394	18.36 (466)	14.54 (369)	29.40 (747)	1	31.10 (790)	25.64 (651)	8.0 (203)	8.00 (203)	400 (181)
SD120100-5	12	10	2650	394	18.36 (466)	14.54 (369)	29.40 (747)	1	31.10 (790)	25.64 (651)	9.50 (241)	8.00 (203)	420 (191)
SD140100-5	14	10	2650	394	18.36 (466)	14.54 (369)	29.40 (747)	1	31.10 (790)	25.64 (651)	11.50 (292)	8.00 (203)	441 (200)
SD120120-5	12	12	3000	570	20.39 (518)	16.62 (422)	33.72 (856)	1	35.50 (902)	29.83 (758)	9.50 (241)	9.50 (241)	589 (267)
SD140120-5	14	12	3000	570	20.39 (518)	16.62 (422)	33.72 (856)	1	35.50 (902)	29.83 (758)	11.50 (292)	9.50 (241)	617 (280)
SD160120-5	16	12	3000	570	20.39 (518)	16.62 (422)	33.72 (856)	1	35.50 (902)	29.83 (758)	11.75 (298)	9.50 (241)	651 (295)
SD140140-5	14	14	3940	628	22.31 (567)	19.26 (489)	34.00 (864)	1	37.66 (957)	31.61 (803)	10.50 (267)	10.50 (267)	895 (406)
SD160140-5	16	14	3940	628	22.31 (567)	19.26 (489)	34.00 (864)	1	37.66 (957)	31.61 (803)	11.75 (298)	10.50 (267)	934 (424)

NOTE: Dimensions are in inches. Metric dimensions are in millimeters and are in parentheses ( ). Weights are in lb (kg).  
 'C' is the distance required to replace strainer.



# SUCTION DIFFUSER REAR STRAINER PULLOUT (RSP) (CONTINUED)

Submittal

Job \_\_\_\_\_ Contractor \_\_\_\_\_ Item no. \_\_\_\_\_

Engineer \_\_\_\_\_ Rep. \_\_\_\_\_ Model no. \_\_\_\_\_

**Connection Flange: 250/300**

Model Number	System NPS	Pump NPS	Cv	Free Area (sq. in.)	A in (mm)	B in (mm)	C in (mm)	D NPT	E in (mm)	H in (mm)	K in (mm)	L in (mm)	Weight lb (kg)
SD020015-5A	2	1-1/2	54	21	6.06 (154)	5.39 (137)	8.49 (216)	3/4	9.25 (235)	7.29 (185)	3.25 (83)	3.06 (78)	27 (12)
SD020020-5A	2	2	106	21	5.69 (145)	5.39 (137)	8.24 (209)	3/4	9.25 (235)	6.92 (176)	3.25 (83)	3.25 (83)	28 (13)
SD025020-5A	2 1/2	2	106	21	5.69 (145)	5.39 (137)	8.24 (209)	3/4	9.25 (235)	6.92 (176)	3.75 (95)	3.25 (83)	35 (16)
SD030020-5A	3	2	106	21	5.69 (145)	5.39 (137)	8.24 (209)	3/4	9.25 (235)	6.92 (176)	4.12 (105)	3.25 (83)	39 (18)
SD025025-5A	2-1/2	2-1/2	135	24	6.56 (167)	6.01 (153)	8.97 (228)	3/4	10.35 (263)	7.91 (201)	3.75 (95)	3.75 (95)	52 (24)
SD030025-5A	3	2-1/2	135	24	6.56 (167)	6.01 (153)	8.97 (228)	1	10.35 (263)	7.91 (201)	4.12 (105)	3.75 (95)	52 (24)
SD040025-5A	4	2-1/2	135	24	6.07 (154)	8.45 (215)	8.97 (228)	3/4	10.35 (263)	7.59 (193)	4.93 (125)	3.75 (95)	65 (29)
SD030030-5A	3	3	220	35	7.62 (194)	6.56 (167)	10.47 (266)	1	12.18 (309)	9.09 (231)	4.12 (105)	4.12 (105)	66 (30)
SD040030-5A	4	3	220	35	7.62 (194)	6.56 (167)	10.47 (266)	1	12.18 (309)	9.09 (231)	5.00 (127)	4.12 (105)	72 (33)
SD050030-5A	5	3	220	35	6.86 (174)	8.94 (227)	10.47 (266)	1	12.18 (309)	8.51 (216)	5.43 (138)	4.13 (105)	83 (38)
SD040040-5A	4	4	380	64	8.93 (227)	8.45 (215)	12.86 (327)	1	14.90 (378)	11.28 (287)	5.00 (127)	5.00 (127)	91 (41)
SD050040-5A	5	4	380	64	8.93 (227)	8.45 (215)	12.86 (327)	1	14.90 (378)	11.28 (287)	5.50 (140)	5.00 (127)	97 (44)
SD060040-5A	6	4	380	64	8.93 (227)	8.45 (215)	12.86 (327)	1	14.90 (378)	11.28 (287)	6.25 (159)	5.00 (127)	109 (49)
SD050050-5A	5	5	669	100	10.06 (256)	8.94 (227)	15.36 (390)	1	16.54 (420)	12.48 (317)	5.50 (140)	5.50 (140)	116 (53)
SD060050-5A	6	5	669	100	10.06 (256)	8.94 (227)	15.36 (390)	1	16.54 (420)	12.48 (317)	6.25 (159)	5.50 (140)	127 (58)
SD080050-5A	8	5	669	100	10.06 (256)	13.21 (336)	15.36 (390)	1	16.54 (420)	12.67 (322)	7.43 (189)	5.50 (140)	194 (88)
SD060060-5A	6	6	985	146	12.08 (307)	11.17 (284)	19.02 (483)	1	20.89 (531)	16.67 (423)	6.25 (159)	6.25 (159)	193 (88)
SD080060-5A	8	6	985	146	12.08 (307)	11.17 (284)	19.02 (483)	1	20.89 (531)	16.67 (423)	7.50 (191)	6.25 (159)	215 (98)
SD100060-5A	10	6	985	146	12.08 (307)	11.17 (284)	19.02 (483)	1	20.89 (531)	16.67 (423)	8.75 (222)	6.25 (159)	238 (108)
SD080080-5A	8	8	1657	248	15.31 (389)	13.21 (336)	23.79 (604)	1	26.19 (665)	21.10 (536)	7.50 (191)	7.50 (191)	319 (145)
SD100080-5A	10	8	1657	248	15.31 (389)	13.21 (336)	23.79 (604)	1	26.19 (665)	21.10 (536)	8.75 (222)	7.50 (191)	351 (159)
SD120080-5A	12	8	1657	248	15.31 (389)	13.21 (336)	23.79 (604)	1	26.19 (665)	21.10 (536)	10.25 (260)	7.50 (191)	388 (176)
SD100100-5A	10	10	2650	394	19.61 (498)	14.54 (369)	29.40 (747)	1	32.35 (822)	26.89 (683)	8.75 (222)	8.75 (222)	482 (219)
SD120100-5A	12	10	2650	394	19.61 (498)	14.54 (369)	29.40 (747)	1	32.35 (822)	26.89 (683)	10.25 (260)	8.75 (222)	518 (235)
SD140100-5A	14	10	2650	394	19.61 (498)	14.54 (369)	29.40 (747)	1	32.35 (822)	26.89 (683)	10.25 (260)	8.75 (222)	557 (253)
SD120120-5A	12	12	3000	570	22.64 (575)	16.62 (422)	33.72 (856)	1	37.75 (959)	32.08 (815)	10.25 (260)	10.25 (260)	703 (319)
SD140120-5A	14	12	3000	570	22.64 (575)	16.62 (422)	33.72 (856)	1	37.75 (959)	32.08 (815)	11.50 (292)	10.25 (260)	786 (357)
SD160120-5A	16	12	3000	570	22.64 (575)	16.62 (422)	33.72 (856)	1	37.75 (959)	32.08 (815)	12.75 (324)	10.25 (260)	802 (364)
SD140140-5A	14	14	3940	628	22.31 (567)	19.26 (489)	34.00 (864)	1	37.66 (957)	31.61 (803)	11.50 (292)	11.50 (292)	1049 (476)
SD160140-5A	16	14	3940	628	22.31 (567)	19.26 (489)	34.00 (864)	1	37.66 (957)	31.61 (803)	12.75 (324)	11.50 (292)	1106 (502)

NOTE: Dimensions are in inches. Metric dimensions are in millimeters and are in parentheses ( ). Weights are in lb (kg).  
 'C' is the distance required to replace strainer.



# SUCTION DIFFUSER REAR STRAINER PULLOUT (RSP) (CONTINUED)

Submittal

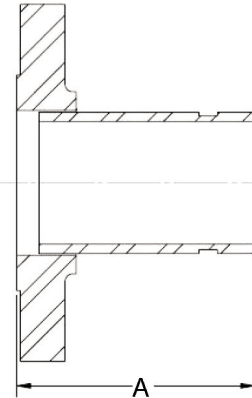
Job \_\_\_\_\_ Contractor \_\_\_\_\_ Item no. \_\_\_\_\_

Engineer \_\_\_\_\_ Rep. \_\_\_\_\_ Model no. \_\_\_\_\_

### Grooved Adapter

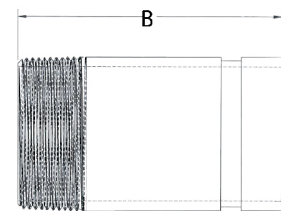
#### FLANGED - GROOVED

Class 125 Assembly Part No.	Class 250 Assembly Part No.	Size	'A'
FTG020-5	FTG020-5A	2"	4"
FTG025-5	FTG025-5A	2-1/2"	
FTG030-F	FTG030-5A	3"	6"
FTG040-5	FTG040-5A	4"	
FTG050-5	FTG050-5A	5"	
FTG060-5	FTG060-5A	6"	
FTG080-5	FTG080-5A	8"	8"
FTG100-5	FTG100-5A	10"	
FTG120-5	FTG120-5A	12"	
FTG140-5	FTG140-5A	14"	



#### THREADED - GROOVED

Class 125 + 250 Assembly Part No.	Size	'B'
TTG015-5	1-1/2"	4"
TTG020-5	2"	
TTG025-5	2-1/2"	



FLANGED - GROOVED

*Note: Adapters required to convert flanged & threaded MPV to grooved.*

### Features

- Integral Cast Straightening Vanes ensure uniform flow to the suction inlet of the pump
- Oversized Body Cylinder ensures minimal pressure drop
- Metering Port allows for the monitoring of system conditions
- Disposable Fine Mesh Start-Up Strainer promotes cleaner, more trouble-free system
- Removable Cover Plate and reusable "O" Ring allows for easy access and maintenance of Permanent Strainer
- Blow Down port allows for routine maintenance and removal of sediment and debris
- Ductile Iron Body on all units
- Optional Magnetic Insert to trap small metallic particles
- Available with ASME Class 125/150 or ASME Class 250/300 compatible flanges.

### Materials of Construction

Body	Ductile Iron
Cover	Ductile Iron
Permanent Strainer	Stainless Steel (304)
Disposable Start Up Strainer	Bronze (16 Mesh)
Cover O-Ring	EPDM

### Operating Specifications

	Standard	Optional
Flange	Class 125*	Class 250*
Pressure	175 PSIG* (1210 KPA)	300 PSIG* (2070 KPA)
Temperature	250°F (120°C**)	250°F (120°C**)

\* Per Pressure Temperature Ratings chart to left.



# SUCTION DIFFUSER REAR STRAINER PULLOUT (RSP) (CONTINUED)

Submittal

Job \_\_\_\_\_ Contractor \_\_\_\_\_ Item no. \_\_\_\_\_

Engineer \_\_\_\_\_ Rep. \_\_\_\_\_ Model no. \_\_\_\_\_

