

Installation & Operation Instructions Manual

PS SERIES PLAIN STEEL EXPANSION TANK

SUPERSEDES: NEW

EFFECTIVE: August 30, 2023

Plant ID No. 001-5057

Taco PS Series (non-bladder style) expansion tanks are designed and fabricated to ASME Code for Unfired Pressure Vessels, Sect. VIII, Div. 1. Prior to shipment, all tanks are hydrostatically tested to 1.3 times their rated working pressure and certified by an independent Authorized Inspector. Upon receipt of each tank, the shipping container should be examined for external damage. If the shipping container has been damaged in transit, the contents of the packaging should also be examined prior to acceptance of shipment. If the tank appears to be damaged, the shipment should be refused and/or signed for as damaged. If the tank is damaged, the local Taco representative should be contacted for further instruction.

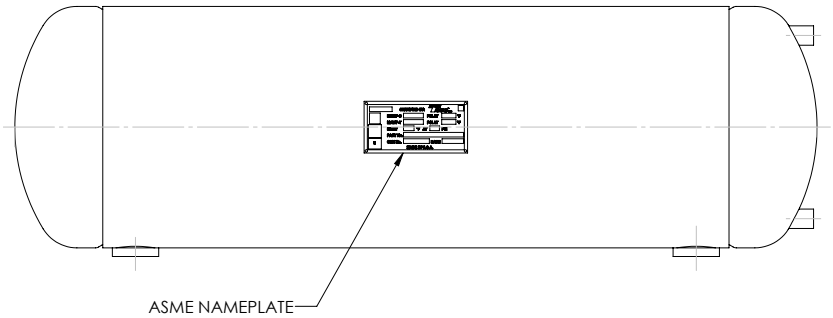
CONSTRUCTION

Shell: Carbon Steel
Exterior: Red-Oxide Primer

PERFORMANCE LIMITATIONS

Maximum Design Temperature: 375°F* Maximum Design Pressure: 125 PSIG*

*Higher temperatures and pressures available, consult factory.

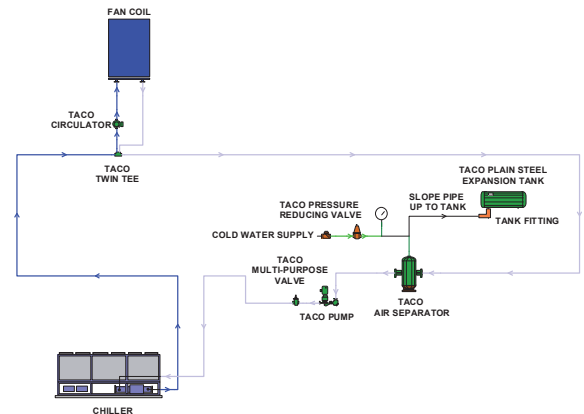


Install sight-glass as required by design engineer.

Set tank in place and pipe tank to system using the tanks system connection. Piping to tank should be pitched 3 degrees to ensure air does not become trapped in piping. Be sure to include isolation valve(s) and drain. Refer to Tank Fittings (submittal number 401-050) for tank fittings available from Taco.

A regular inspection schedule should be implemented to inspect the water level in the sight-glass. This will permit appropriate safeguarding of the system and the extended lifespan of the tank.

In case the tank becomes overly saturated with water, isolate and drain the tank, refill the tank with system water, and monitor the water level.



LIMITED WARRANTY STATEMENT

Taco, Inc. will repair or replace without charge (at the company's option) any product or part which is proven defective under normal use within one (1) year from the date of start-up or one (1) year and six (6) months from date of shipment (whichever occurs first).

In order to obtain service under this warranty, it is the responsibility of the purchaser to promptly notify the local Taco stocking distributor or Taco in writing and promptly deliver the subject product or part, delivery prepaid, to the stocking distributor. For assistance on warranty returns, the purchaser may either contact the local Taco stocking distributor or Taco. If the subject product or part contains no defect as covered in this warranty, the purchaser will be billed for parts and labor charges in effect at time of factory examination and repair.

Any Taco product or part not installed or operated in conformity with Taco instructions or which has been subject to misuse, misapplication, the addition of petroleum-based fluids or certain chemical additives to the systems, or other abuse, will not be covered by this warranty. If in doubt as to whether a particular substance is suitable for use with a Taco product or part, or for any application restrictions, consult the applicable Taco instruction sheets or contact Taco at [401-942-8000].

Taco reserves the right to provide replacement products and parts which are substantially similar in design and functionally equivalent to the defective product or part. Taco reserves the right to make changes in details of design, construction, or arrangement of materials of its products without notification.

TACO OFFERS THIS WARRANTY IN LIEU OF ALL OTHER EXPRESS WARRANTIES. ANY WARRANTY IMPLIED BY LAW INCLUDING WARRANTIES OF MERCHANTABILITY OR FITNESS IS IN EFFECT

ONLY FOR THE DURATION OF THE EXPRESS WARRANTY SET FORTH IN THE FIRST PARAGRAPH ABOVE.

THE ABOVE WARRANTIES ARE IN LIEU OF ALL OTHER WARRANTIES, EXPRESS OR STATUTORY, OR ANY OTHER WARRANTY OBLIGATION ON THE PART OF TACO.

TACO WILL NOT BE LIABLE FOR ANY SPECIAL, INCIDENTAL, INDIRECT OR CONSEQUENTIAL DAMAGES RESULTING FROM THE USE OF ITS PRODUCTS OR ANY INCIDENTAL COSTS OF REMOVING OR REPLACING DEFECTIVE PRODUCTS.

This warranty gives the purchaser specific rights, and the purchaser may have other rights which vary from state to state. Some states do not allow limitations on how long an implied warranty lasts or on the exclusion of incidental or consequential damages, so these limitations or exclusions may not apply to you.

