



A Taco Group Company

Effective: 10/17/24

# Submittal Data Information

101-029

## Model 007 Cartridge Circulator

Supersedes: 06/10/15

Job: \_\_\_\_\_ Engineer: \_\_\_\_\_ Contractor: \_\_\_\_\_ Rep: \_\_\_\_\_

ITEM NO.	MODEL NO.	IMP. DIA.	G.P.M.	HEAD/FT.	H.P.	ELEC. CHAR.

### Features

- Standard High Capacity Output-Compact Design
- Quiet, Efficient Operation
- Direct Drive-Low Power Consumption
- Unique Replaceable Cartridge Design-Field Serviceable
- Self Lubricating
- No Mechanical Seal
- Unmatched Reliability-Maintenance Free
- Universal Flange to Flange Dimensions
- Cast Iron or Stainless Steel Construction

### Application

The Taco 007 is a cartridge style, maintenance free, wet-rotor, in-line, single stage circulator pump. It is designed for quiet operation in Hydronic heating, Radiant heating, Hydro-Air fan coils, Indirect water heaters, Chilled fresh water, and Domestic Water Recirculation systems. Available in Cast Iron or Stainless Steel construction with universal flanged connections. The unique replaceable cartridge contains all of the moving parts and allows the circulator to be easily serviced instead of replacing the entire unit. Ideal for a wide range of applications.

### Pump Dimensions & Weights

Models	Casing	Flange Type*	A		B		C		D		F		G		Ship Wt.	
			in.	mm	in.	mm	in.	mm	in.	mm	in.	mm	in.	mm	lbs.	Kg
007-F5	Cast Iron	S	6-3/8	162	4-1/2	114	3-3/16	81	3-15/16	75	4-3/4	121	6-3/8	162	8.0	3.6
007-F5-5	Cast Iron	R	6-1/2	156	4-1/2	114	3-3/16	81	3-15/16	75	4-3/4	121	6-3/8	162	8.0	3.6
007-SF5	St. Steel	S	6-3/8	162	4-1/2	114	3-3/16	81	3-15/16	75	4-3/4	121	6-3/8	162	7.0	3.2

### Materials of Construction

Casing (Volute):..... Cast Iron or Stainless Steel  
 Stator Housing:..... Steel  
 Cartridge:..... Stainless Steel  
 Impeller:..... Non-Metallic  
 Shaft:..... Ceramic  
 Bearings:..... Carbon  
 O-Ring & Gaskets:..... EPDM

### Model Nomenclature

F - Cast Iron, Flanged  
 SF - Stainless Steel, Flanged

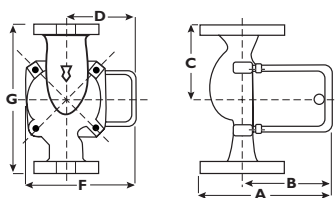
### Performance Data

Max. Flow: 23 GPM  
 Max. Head: 10 Feet  
 Min. Fluid Temperature: 40°F (4°C)  
 Max. Fluid Temperature: 230°F (110°C)  
 Max. Working Pressure: 125 psi  
 Connection Sizes: 3/4", 1", 1-1/4", 1-1/2" Flanged

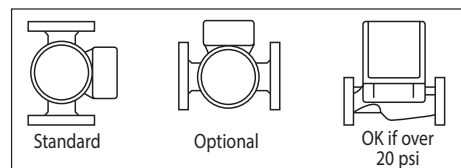
### Certifications & Listings

US LISTED FOR INDOOR USE ONLY

Low Lead Compliant  
Certified to NSF/ANSI CAN 572



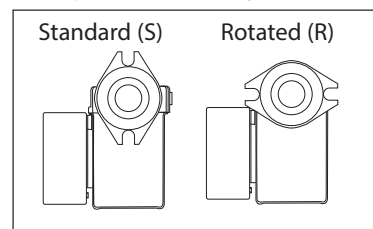
### Mounting Positions



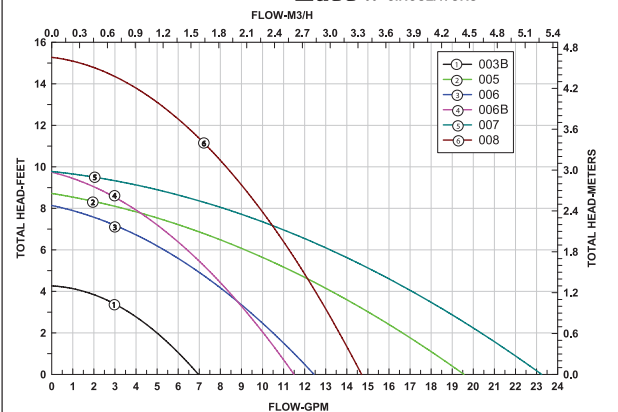
### Electrical Data

Model	Volts	Hz	Ph	Amps	RPM	HP
Cast Iron	115	60	1	.74	3250	1/25
St. Steel	115	60	1	.76	3250	1/25
Motor Type	Permanent Split Capacitor Impedance Protected					
Motor Options	220/50/1, 220/60/1, 230/60/1, 100/110/50/60/1					

### \*Flange Orientation Type



### Performance Field - 60Hz 007 CIRCULATORS



Taco Inc., 1160 Cranston Street, Cranston, RI 02920 / (401) 942-8000  
 Taco (Canada) Ltd., 8450 Lawson Road, Unit #3, Milton, Ontario L9T 0J8 / (905) 564-9422