



# Submittal Data Information

## Model 003 Cartridge Circulator

101-061

Effective: November 24, 2024

Supersedes: March 17, 2017

Job: \_\_\_\_\_ Engineer: \_\_\_\_\_ Contractor: \_\_\_\_\_ Rep: \_\_\_\_\_

ITEM NO.	MODEL NO.	

### Features

- Reduces erosion corrosion and flow noise in shorter pipe run applications
- Standard high capacity output - Compact design
- Quiet, efficient operation
- Direct drive - Low power consumption
- Unique replaceable cartridge design - Field serviceable
- Self lubricating
- No mechanical seal
- Unmatched reliability - Maintenance free
- Low-lead Bronze sweat or Stainless Steel with threaded or union connections

### Materials of Construction

Casing (Volute):.....Low-lead Bronze or Stainless Steel  
 Stator housing:.....Steel  
 Cartridge:.....Stainless Steel  
 Impeller: .....Non-metallic  
 Shaft:.....Ceramic  
 Bearings:.....Carbon  
 O-Ring & Gaskets: .....EPDM  
*Chlorine resistant*

### Model Nomenclature

B - Bronze, 3/4" sweat  
 BC - Bronze, 1/2" sweat, panel mount tapings  
 ST - Stainless Steel, 3/4" NPT  
 SC - Stainless Steel, union, panel mount tapings

### Performance Data

Flow Range: 0 – 7 GPM  
 Head Range: 0 – 4.5 Feet  
 Min. Fluid Temperature: 40°F (4°C)  
 Max. Fluid Temperature: 220°F (104°C)  
 Max. Working Pressure: 125 psi  
 Connection sizes:  
 1/2" swt, 3/4" swt, 3/4" NPT or union

### Certifications & Listings



FOR INDOOR USE ONLY  
 US LISTED



Certified to NSF/ANSI 61 & 372

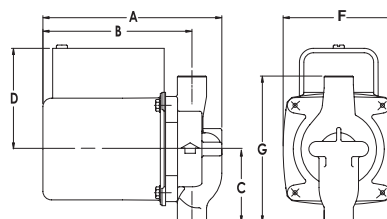
Low-Lead Compliant

### Application

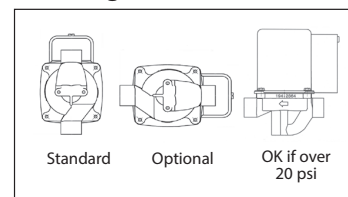
The Taco 003 is designed for circulating hot or chilled fresh water in open or closed loop, lower flow applications. Flow characteristics are ideal for domestic hot water recirculation, heat recovery units, water source heat pumps and potable water systems. The unique, replaceable cartridge contains all of the moving parts and allows for easy service instead of replacing the entire circulator. The compact, low power consumption design is ideal for high efficiency jobs.

### Pump Dimensions & Weights

Models	Conn.	A		B		C		D		F		G		Ship Wt.	
		in.	mm	in.	mm	in.	mm	in.	mm	in.	mm	in.	mm	lbs.	Kg
003-BC4	1/2" Swt.	5-1/8	130	4-1/8	105	2-1/8	54	3-1/16	78	3-15/16	84	4-1/4	108	6.0	2.7
003-B4	3/4" Swt.	5-1/8	130	4-1/8	105	2-3/16	56	3-1/16	78	3-15/16	84	4-3/8	111	6.0	2.7
003-ST4	3/4" NPT	5-5/8	143	4-7/8	124	2	51	3-1/16	78	3-15/16	84	4	102	6.0	2.7
003-SC4-1	Union	5-5/32	131	4-11/32	110	2-31/32	76	3-1/16	78	3-15/16	84	5-15/16	151	6.0	2.7



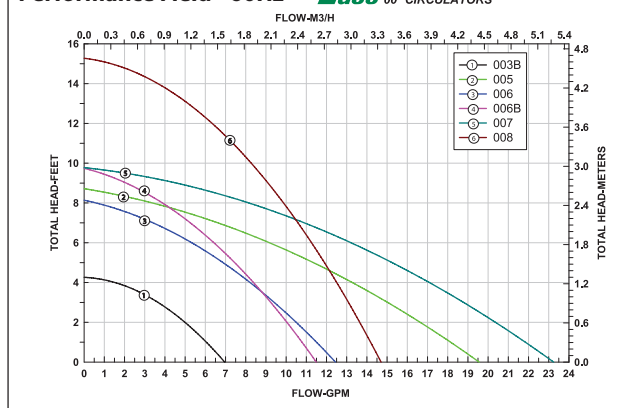
### Mounting Positions



### Electrical Data

Model	Volts	Hz	Ph	Amps	RPM	HP
All 003 Models	115	60	1	.43	3250	1/40
Motor Type	Permanent Split Capacitor Impedance Protected					
Motor Options	220/50/1, 220/60/1, 230/60/1, 100/110/50/60/1					

### Performance Field - 60Hz



Taco Inc., 1160 Cranston Street, Cranston, RI 02920 / (401) 942-8000  
 Taco (Canada) Ltd., 8450 Lawson Road, Unit #3, Milton, Ontario L9T 0J8 / (905) 564-9422