

Model 0012-IFC® Cartridge Circulator

The High Velocity series Taco 0012-IFC Cartridge Circulator now includes an Integral Flow Check (IFC). The removable IFC replaces a separate in-line flow check, saving installation costs while improving system performance. Available in Cast Iron or Stainless Steel construction.



**Low-Lead
Compliant**



Submittal Data Information Model 0012-IFC® Cartridge Circulator

Submittal Data # 101-100
Supersedes: 01/12/15

Effective: 12/15/24

Features

- Integral Flow Check (IFC®)
 - Prevents gravity flow
 - Eliminates separate in-line flow check
 - Reduces installed cost, easy to service
 - Improved performance vs. In-line flow checks
- Unique replaceable cartridge
 - Field serviceable
- Unmatched reliability
 - Maintenance free
- Quiet, efficient operation
- Direct drive-Low power consumption
- Self lubricating, No mechanical seal
- Standard high capacity output
 - Compact design
- Wide range of applications
- Cast Iron or Stainless Steel construction, Flanged connections

Materials of Construction

Casing (Volute): Cast Iron or Stainless Steel
Integral Flow Check:
Body, Plunger.....Acetal
O-ring SealsEPDM
Spring.....Stainless Steel
Stator Housing:.....Aluminum
Cartridge:.....Stainless Steel
Impeller:.....Non-Metallic
Shaft:.....Ceramic
Bearings:.....Carbon
O-Ring & Gaskets:.....EPDM

Model Nomenclature

F – Cast Iron, Flanged
SF – Stainless Steel, Flanged
IFC – Integral Flow Check

Performance Data

Max. Flow: 42 GPM
Max. Head: 13 Feet
Min. Fluid Temperature: 40°F (4°C)
Max. Fluid Temperature: 230°F (110°C)
Max. Working Pressure: 150 psi
Connection Sizes: 1-1/2" or 2", Flanged

Certifications & Listings

 **US LISTED** FOR INDOOR USE ONLY

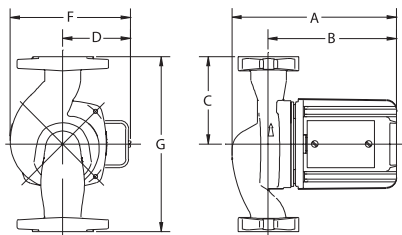
 **Low-Lead Compliant**
Certified to NSF/ANSI 372

Application

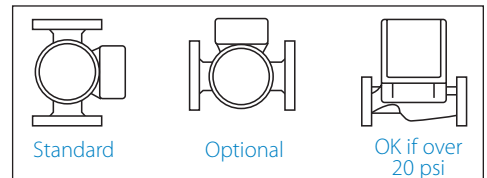
The Taco 0012-IFC with Integral Flow Check (IFC®) is designed to reduce installation costs when zoning with 00° circulators on high flow / medium head applications in large residential and light commercial systems. Ideal for large BTUH Boilers, 2" recirculation loops, primary/secondary loops, commercial water heaters and light commercial heating and cooling systems. The Stainless Steel 0012-IFC can be used on open loop systems. The unique replaceable cartridge contains all of the moving parts and allows for easy service instead of replacing the entire circulator.

Pump Dimensions & Weights FLANGES INCLUDED

Models	Casing	Flange Size	Flange Code	A		B		C		D		F		G		Ship Wt.	
				in.	mm	in.	mm	in.	mm	in.	mm	in.	mm	in.	mm	lbs.	Kg
0012-F4-IFC	Cast Iron	1-1/2"	R	8-1/16	205	6-3/8	162	4-1/4	108	3-5/16	84	6	152	8-1/2	216	14.0	6.3
0012-F4-2 IFC	Cast Iron	1-1/2"	S	8-5/8	219	6-3/8	162	4-1/4	108	3-5/16	84	6	152	8-1/2	216	14	6.3
0012-F4-1 IFC	Cast Iron	2"	S	9	229	6-3/8	162	4-1/4	108	3-5/16	84	6	152	8-1/2	216	14	6.3
0012-SF4-IFC	St. Steel	1-1/2"	S	8-5/8	219	6-3/8	162	4-1/4	108	3-5/16	84	6	152	8-1/2	216	14	6.3
0012-SF4-2 IFC	St. Steel	1-1/2"	R	8-1/16	205	6-3/8	162	4-1/4	108	3-5/16	84	6	152	8-1/2	216	14	6.3



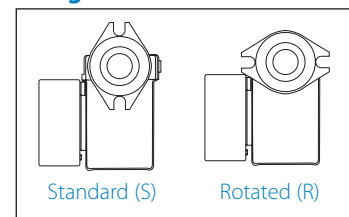
Mounting Positions



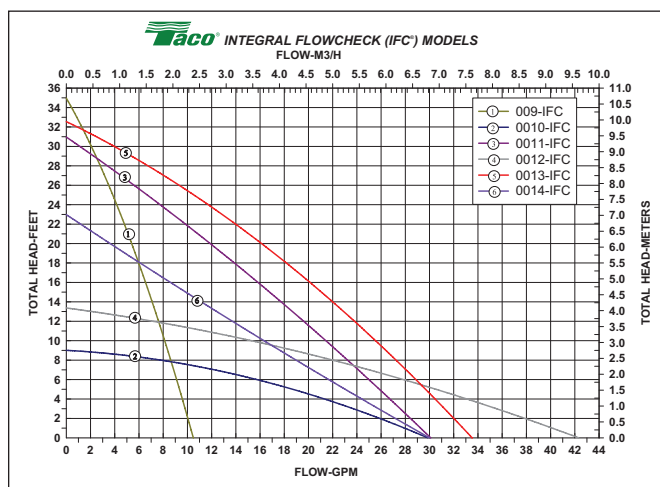
Electrical Data

Model	Volts	Hz	Ph	Amps	RPM	HP
All Models	115	60	1	1.33	3250	1/8
Motor Type	Permanent Split Capacitor Impedance Protected					
Motor Options	220/50/1, 220/60/1, 230/60/1, 100/110/50/60/1					

Flange Orientation



Performance Field - 60Hz




Do your **best work.**

Taco Inc., 1160 Cranston Street, Cranston, RI 02920 / (401) 942-8000
Taco (Canada) Ltd., 8450 Lawson Road, Unit #3, Milton, Ontario L9T 0J8 / (905) 564-9422
www.TacoComfort.com