



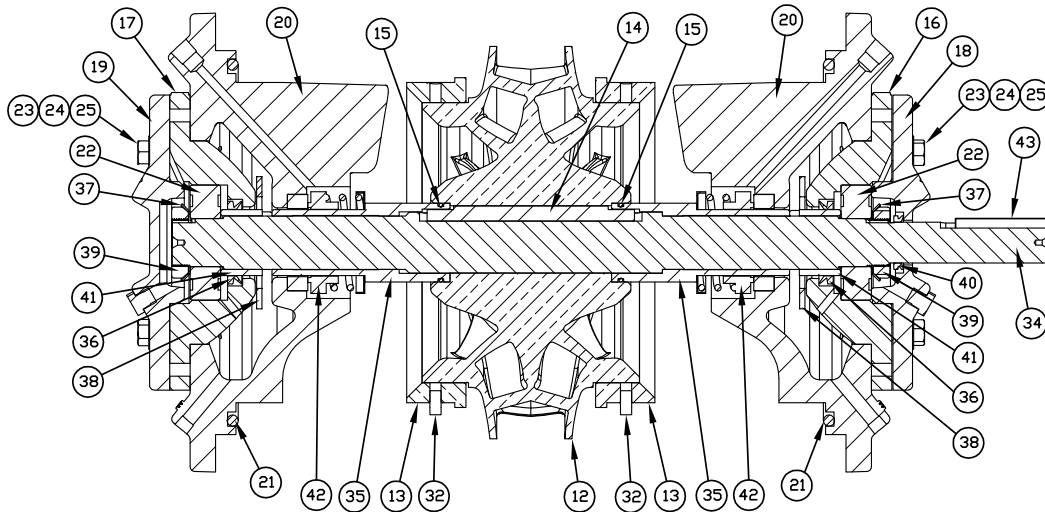
REPLACEMENT PARTS

FOR MODELS HS060509, HS060511, HS060512 & HS060515

Submittal

Job _____ Contractor _____ Item no. _____

Engineer _____ Rep. _____ Model no. _____



Item No.	Quantity Req.	Description	Part Numbers			
			Pump Model HS060509	Pump Model HS060511	Pump Model HS060512	Pump Model HS060515
12	1	Impeller (Bronze)	974-1031RP	974-1082RP	974-1052RP	974-1059RP
13	2	Wear Ring (Bronze)	974-1032RP	974-1083RP	974-1032RP	974-1075RP
14	1	Impeller Key (Carbon Steel)	974-1088RP			974-1086RP
14	1	Impeller Key (Stainless Steel)	974-1089RP			974-1087RP
15	2	O-Ring, Sleeve	951-176RP			953-2564RP
16	1	Bearing Housing (Drive End)	974-1035RP			974-1062RP
17	1	Bearing Housing (Non-Drive End)	974-1036RP			974-1063RP
18	2	Cap, Bearing Housing (Drive End)	974-1037RP			974-1064RP
19	2	Cap, Bearing Housing (Non-Drive End)	974-1038RP			974-1065RP
20	2	Cover, 125#	974-1033RP	974-1080RP	974-1033RP	974-1060RP
20	2	Cover, 250#	974-1034RP	974-1081RP	974-1034RP	974-1061RP
21	1	O-Ring, Cover	974-1047RP			
22	2	Ball Bearing-Sealed	820-1039RP			953-2215RP
23	8	3/8 x 1.75 Hex Bolt, Cap	10-283RP			
24	32	3/8 Washer, Cap & Cover	14-315RP			
25	24	3/8 x 1.50 Hex Bolt, Cap & Cover	10-227RP			
32	2	Pin, Casing Alignment	17-1418RP			
34	1	Shaft (Carbon Steel)	974-1039RP			974-1066RP
34	1	Shaft (Stainless Steel)	974-1040RP			974-1067RP
35	2	Sleeve (Bronze)	974-1041RP			974-1068RP
36	2	V-Ring (Sleeve)	953-1575-7RP			953-1575-8RP
37	2	Lock Washer (Bearing)	951-2515RP			951-2516RP
38	2	Slinger Ring	951-1971RP			953-2552RP
39	2	Round Slotted Nut (Bearing)	974-1018RP			974-1072RP
40	1	V-Ring (Shaft)	953-1575-2RP			953-1575-7RP
41	2	Bushing Bearing Sleeve Spacer	974-1042RP			974-1069RP
43	1	Key, Coupler	13-128RP			13-127RP

All trademarks, logos and brand names are the property of their respective owners. All company, product and service names used in this product catalog are for identification purposes only. Use of these names, trademarks and brands does not imply endorsement.