



Submittal Data Information

Model 0010 Cartridge Circulator

101-033

Effective: 10/14/24

Supersedes: 02/17/16

Job: _____ Engineer: _____ Contractor: _____ Rep: _____

ITEM NO.	MODEL NO.	

Features

- Standard high capacity output - Compact design
- Quiet, efficient operation
- Direct drive - Low power consumption
- Unique Replaceable Cartridge design (Field serviceable)
- Self Lubricating
- No mechanical seal
- Unmatched reliability - Maintenance free
- Universal flange to flange dimensions
- Cast Iron or Stainless Steel construction

Materials of Construction

Casing (Volute): Cast Iron or Stainless Steel
 Stator Housing: Aluminum
 Cartridge: Stainless Steel
 Impeller: Non-metallic
 Shaft: Ceramic
 Bearings: Carbon
 O-Ring & Gaskets: EPDM

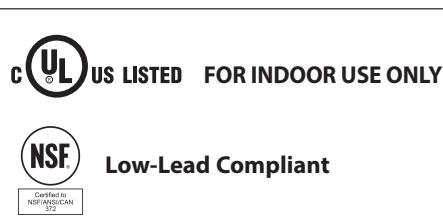
Model Nomenclature

F – Cast Iron, Flanged
 SF – Stainless Steel, Flanged

Performance Data

Max. Flow: 32 GPM
 Max. Head: 10 Feet
 Min. Fluid Temperature: 40°F (4°C)
 Max. Fluid Temperature: 230°F (110°C)
 Max. Working Pressure: 150 psi
 Connection Sizes: 3/4", 1", 1-1/4", 1-1/2" Flanged

Certifications & Listings

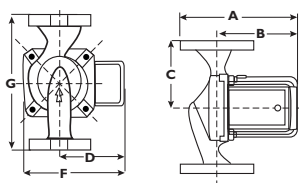


Application

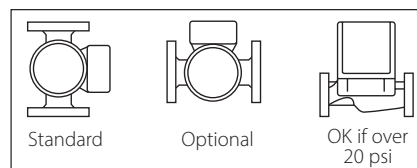
The Taco 0010 is designed for a wide range of large residential or light commercial water circulating applications. Typical uses include hydronic heating, radiant heating, primary-secondary loops, indirect water heaters, chilled water cooling, and potable hot water systems. The Stainless Steel 0010 is designed for all open-loop, fresh water systems. The unique replaceable cartridge contains all of the moving parts and allows for easy service, instead of replacing the entire circulator. Compact, direct-drive, low power consumption design makes it ideal for high-efficiency jobs.

Pump Dimensions & Weights

Models	Casing	A		B		C		D		F		G		Ship Wt.	
		in.	mm	in.	mm	in.	mm	in.	mm	in.	mm	in.	mm	lbs.	Kg
0010-F3	Cast Iron	7-1/4	184	5-5/16	135	3-3/16	81	3-15/16	84	5-3/8	137	6-3/8	162	10	4.5
0010-SF3	St. Steel	7-1/4	184	5-5/16	135	3-3/16	81	3-15/16	84	5-1/8	137	6-3/8	162	9	4



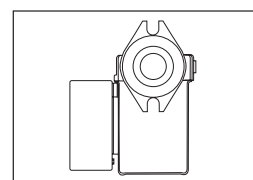
Mounting Positions



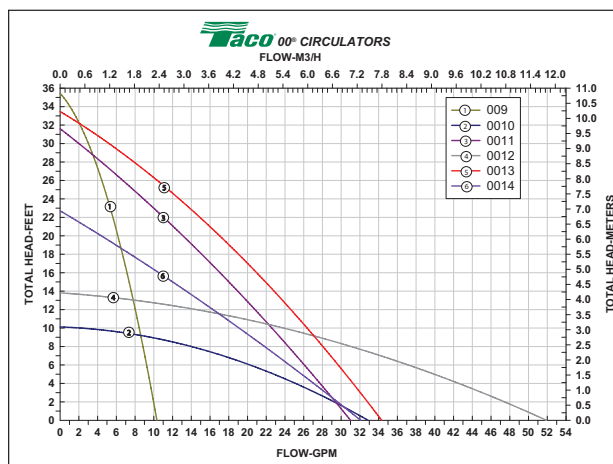
Electrical Data

Model	Volts	Hz	Ph	Amps	RPM	HP
0010-F3	115	60	1	1.10	3250	1/8
0010-SF3	115	60	1	1.20	3250	1/8
Motor Type	Permanent Split Capacitor Impedance Protected					
Motor Options	220/50/1, 220/60/1, 230/60/1, 100/110/50/60/1					

Flange Orientation



Performance Field - 60Hz



Taco Inc., 1160 Cranston Street, Cranston, RI 02920 / (401) 942-8000
 Taco (Canada) Ltd., 8450 Lawson Road, Unit #3, Milton, Ontario L9T 0J8 / (905) 564-9422