

# Replacement Parts List

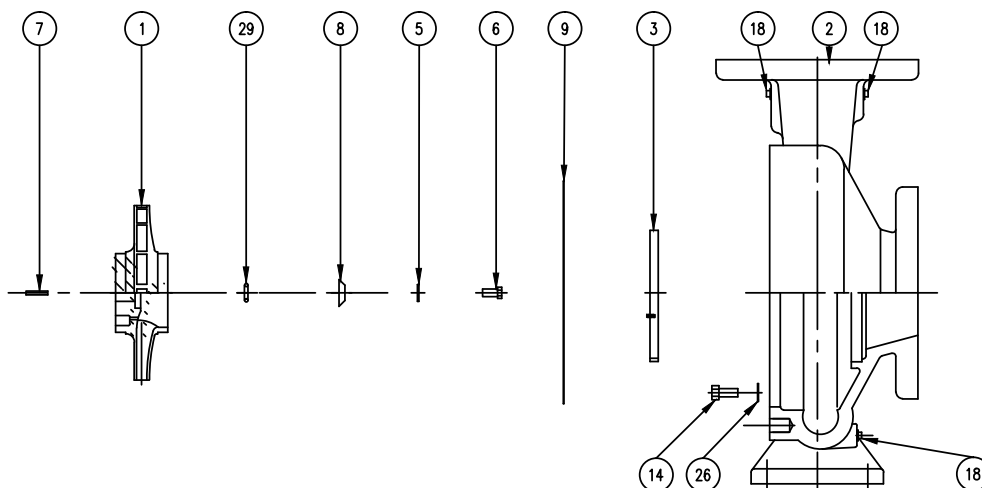
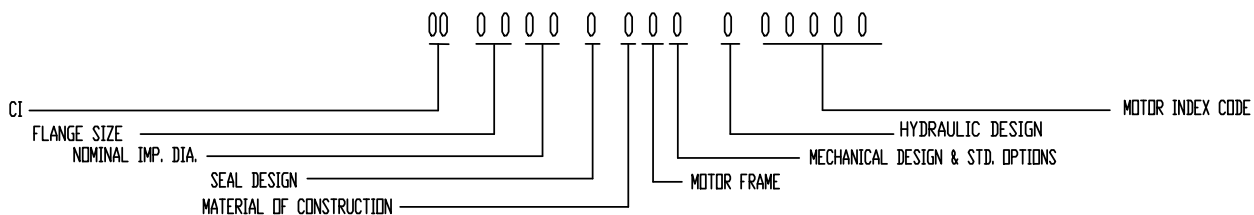
304-525

## CI 2507 & 2507/D

SUPERSEDES: NEW

EFFECTIVE: January 17, 2017

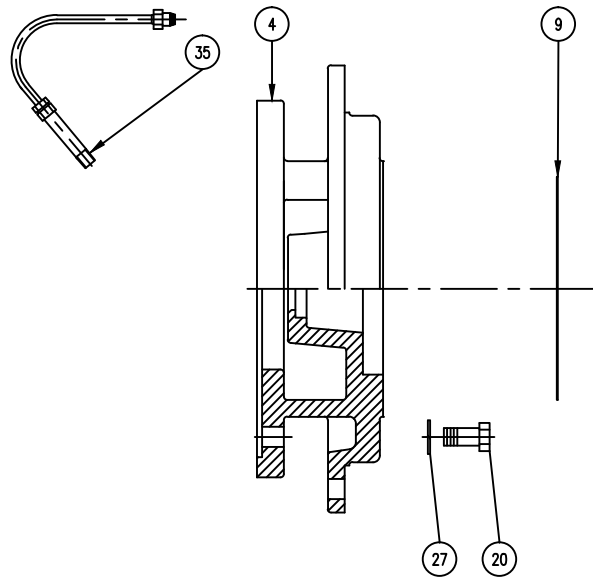
WHEN SELECTING AND ORDERING PARTS, ALWAYS REFER TO SERIAL NUMBER ON NAMEPLATE



| ITEM NO. | NO. REQ. | DESCRIPTION            | 2507              | 2507           | 2507D             | 2507D          |  |
|----------|----------|------------------------|-------------------|----------------|-------------------|----------------|--|
|          |          |                        | FRAME H,J OR K    | FRAME L,M OR N | FRAME H,J OR K    | FRAME L,M OR N |  |
| 1        | 1        | IMPELLER (CI)          | 953-558RP         | 953-559RP      | 953-5002RP        | 953-5004RP     |  |
| 1        | 1        | IMPELLER (BRZ)         | 953-1053RP        | 953-1054RP     | 953-4995RP        | 953-5003RP     |  |
| 1        | 1        | IMPELLER (SS)          | 953-1053SRP       | -              | 953-4996RP        | 953-5005RP     |  |
| 2        | 1        | CASING (125#)(NO W/R)  | 953-588RP         | 953-588RP      | 953-4914RP        | 953-4914RP     |  |
| 2        | 1        | CASING (250#)(NO W/R)  | 953-589RP         | 953-589RP      | 953-4915RP        | 953-4915RP     |  |
| 2        | 1        | CASING (125#)(BRZ W/R) | 953-2290RP        | 953-2290RP     | 953-4912RP        | 953-4912RP     |  |
| 2        | 1        | CASING (250#)(BRZ W/R) | 953-2291RP        | 953-2291RP     | 953-4913RP        | 953-4913RP     |  |
| 3        | 1(W/R)   | WEAR RING (BRZ)        | 953-597RP         | 953-597RP      | 953-5006LRP       | 953-5006LRP    |  |
| 5        | 1        | DOWDY WASHER           | 951-2578RP        | 951-2579RP     | 951-2578RP        | 951-2579RP     |  |
| 6        | 1        | IMPELLER BOLT (SST)    | 3/8NCX1LG         | 1/2NCX1-1/2LG  | 3/8NCX1-3/4LG     | 1/2NCX1-3/4LG  |  |
| 7        | 1        | IMPELLER KEY (SST)     | 3/16X3/16X1-1/8LG | 1/4X1/4X2LG    | 3/16X3/16X1-1/8LG | 1/4X1/4X2LG    |  |
| 8        | 1        | IMPELLER WASHER        | 953-828RP         | 953-829RP      | 953-828RP         | 953-829RP      |  |
| 9        | 1        | GASKET (CASING)        | 953-568RP         | 953-568RP      | 953-5007RP        | 953-5007RP     |  |
| 14       | 8        | CASING BOLT (ST)       | 3/8NCX1LG         | 3/8NCX1LG      | 3/8NCX1LG         | 3/8NCX1LG      |  |
| 18       | 3        | PIPE PLUG (BRS)        | 1/4 NPT           | 1/4 NPT        | 1/4 NPT           | 1/4 NPT        |  |
| 26       | 8        | CASING WASHER (ZN)     | 3/8               | 3/8            | 3/8               | 3/8            |  |
| 29       | 1        | IMPELLER O-RING        | 953-830RP         | 953-759RP      | 953-830RP         | 953-759RP      |  |

AW-1162 REV-

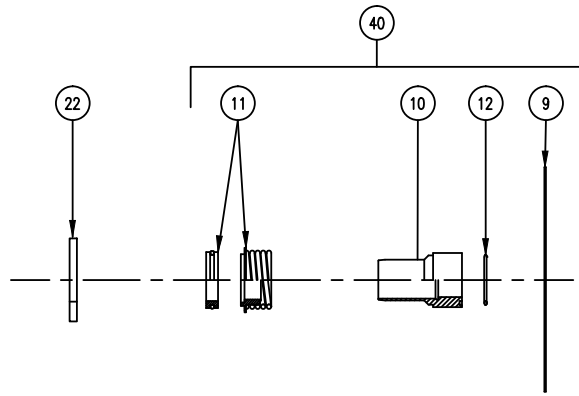
# CI Series Cover Replacement Parts



| ITEM NO. | NO. REQ. | DESCRIPTION     | MOTOR FRAME |               |               |               | PUMP MODEL NUMBER |
|----------|----------|-----------------|-------------|---------------|---------------|---------------|-------------------|
|          |          |                 | H OR J      | K             | L             | M OR N        |                   |
| 4        | 1        | COVER           | 953-1168RP  | 953-1169RP    |               |               | 1207              |
| 4        | 1        | COVER           | 953-1161RP  | 953-1162RP    | 953-1163RP    |               | 1507              |
| 4        | 1        | COVER, 125#     | 953-4920RP  | 953-4922RP    | 953-4916RP    | 953-4918RP    | 2507D             |
|          |          | COVER, 250#     | 953-4921RP  | 953-4923RP    | 953-4917RP    | 953-4919RP    |                   |
| 4        | 1        | COVER           | 953-1164RP  | 953-1165RP    | 953-1166RP    | 953-1167RP    | 2507              |
| 4        | 1        | COVER           | 953-562RP   | 953-564RP     | 953-566RP     | 953-567RP     | 3007              |
| 4        | 1        | COVER           | 953-1788RP  | 953-1789RP    | 953-1790RP    | 953-1791RP    | 4075              |
| 4        | 1        | COVER           | 953-1380RP  | 953-1381RP    | 953-1382RP    | 953-1383RP    | 4007              |
| 4        | 1        | COVER           | 953-1742RP  | 953-1743RP    |               |               | 5007              |
| 9        | 1        | GASKET (CASING) | SEE PAGE 1  | SEE PAGE 1    | SEE PAGE 1    | SEE PAGE 1    | ALL ABOVE         |
| 20       | 4        | MOTOR BOLT      | 3/8NCX1LG   | 1/2NCX1-1/4LG | 1/2NCX1-1/2LG | 5/8NCX1-1/4LG |                   |
| 27       | 4        | MOTOR WASHER    | 3/8         | 1/2           | 1/2           | 5/8           |                   |
| 35       | 1        | TUBE KIT        | 951-1547RP  | 951-1547RP    | 951-1547RP    | 951-1547RP    |                   |

AW-683 REV C

# CI Series Seal Replacement Parts



|   |   |   |   |
|---|---|---|---|
| 1206, 1506,<br>2506   |   | 1206, 1506,<br>2506   |   |
| 1207, 1507, 2007D<br>2007, 2507, 2507D<br>3007, 4075,<br>4007, 5007   | 1207, 1507, 2007D<br>2007, 2507, 2507D<br>3007, 4075,<br>4007, 5007   | 1207, 1507, 2007D<br>2007, 2507, 2507D<br>3007, 4075,<br>4007, 5007   | 1207, 1507, 2007D<br>2007, 2507, 2507D<br>3007, 4075,<br>4007, 5007   |
| 2508  | 2508  | 2508  | 2508  |
| 1209C<br>1509, 1509C,<br>2009, 2009C,<br>2509, 2509C,<br>3009, 3009C,<br>4009, 4009C,<br>5009, 5009C,<br>5095, 6009 | 1209C<br>1509, 1509C,<br>2009, 2009C,<br>2509, 2509C,<br>3009, 3009C,<br>4009, 4009C,<br>5009, 5009C,<br>5095, 6009 | 1209C<br>1509, 1509C,<br>2009, 2009C,<br>2509, 2509C,<br>3009, 3009C,<br>4009, 4009C,<br>5009, 5009C,<br>5095, 6009 | 1209C<br>1509, 1509C,<br>2009, 2009C,<br>2509, 2509C,<br>3009, 3009C,<br>4009, 4009C,<br>5009, 5009C,<br>5095, 6009 |
| 1511, 2511,<br>3011,<br>4011, 4011C,<br>5011  | 1511, 2511,<br>3011,<br>4011, 4011C,<br>5011, 6011  | 1511, 2511,<br>3011,<br>4011, 4011C,<br>5011  | 1511, 2511,<br>3011,<br>4011, 4011C,<br>5011, 6011  |
| 2510, 2510C   | 2510, 2510C   | 2510, 2510C   | 2510, 2510C   |
| 2013C<br>2513, 3013,<br>4013, 5013  | 2013C<br>2513, 3013,<br>4013, 5013,<br>6013   | 2013C<br>2513, 3013,<br>4013, 5013  | 2013C<br>2513, 3013,<br>4013, 5013,<br>6013   |

| ITEM NO. | NO. REQ. | DESCRIPTION           | MOTOR FRAME              |                | MOTOR FRAME              |                    |
|----------|----------|-----------------------|--------------------------|----------------|--------------------------|--------------------|
|          |          |                       | H, J OR K                | L,M,N OR R     | H, J OR K                | L,M,N OR R         |
|          |          |                       | MECHANICAL DESIGN (125#) |                | MECHANICAL DESIGN (250#) |                    |
| 9        | 1        | GASKET (CASING)       | SEE PAGE 1               | SEE PAGE 1     | SEE PAGE 1               | SEE PAGE 1         |
| 10       | 1        | SLEEVE (SS)           | 953-1118RP               | 953-1170RP     | 953-1892RP               | 953-1891RP         |
| 10       | 1        | SLEEVE (BRONZE)       | 953-1119RP               | 953-1171RP     | 953-1861RP               | 953-1887RP         |
| 11       | 1        | SEAL (TYPE B)         | 951-3157RP               | 951-3158RP     | 951-3766RP               | 951-5158RP         |
| 11       | 1        | SEAL (TYPE D)         | 951-3159RP               | 951-3160RP     | 951-3781RP               | 951-5159RP         |
| 11       | 1        | SEAL (TYPE E)         | 951-3161RP               | 951-3162RP     | 951-3782RP               | 951-5160RP         |
| 11       | 1        | SEAL (TYPE F)         | 951-6415RP               | 951-6417RP     | 951-6461RP               | 951-6456RP (L)     |
| 12       | 1        | SLEEVE GASKET         | 592-525RP                | 951-3042RP     | 953-525RP                | 951-3042RP         |
| 22       | 1        | DEFLECTOR             | 900-044RP                | 951-3065RP     | 900-044RP                | 951-3065RP         |
| 40       | 1        | SEAL KIT (TYPE B) SS  | 953-1549-1RP             | 953-1549-4RP   | 953-1549-7RP             | 953-1549-10RP      |
| 40       | 1        | SEAL KIT (TYPE B) BRZ | 953-1549-1BRP            | 953-1549-4BRP  | 953-1549-7BRP            | 953-1549-10BRP     |
| 40       | 1        | SEAL KIT (TYPE D) SS  | 953-1549-2RP             | 953-1549-5RP   | 953-1549-8RP             | 953-1549-11RP      |
| 40       | 1        | SEAL KIT (TYPE D) BRZ | 953-1549-2BRP            | 953-1549-5BRP  | 953-1549-8BRP            | 953-1549-11BRP     |
| 40       | 1        | SEAL KIT (TYPE E) SS  | 953-1549-3RP             | 953-1549-6RP   | 953-1549-9RP             | 953-1549-12RP      |
| 40       | 1        | SEAL KIT (TYPE E) BRZ | 953-1549-3BRP            | 953-1549-6BRP  | 953-1549-9BRP            | 953-1549-12BRP     |
| 40       | 1        | SEAL KIT (TYPE F) SS  | 953-1549-41RP            | 953-1549-42RP  | 953-1549-43RP            | 953-1549-44RP (L)  |
| 40       | 1        | SEAL KIT (TYPE F) BRZ | 953-1549-41BRP           | 953-1549-42BRP | 953-1549-43BRP           | 953-1549-44BRP (L) |

AW-687 Rev M



**Taco Comfort Solutions™** A Taco Family Company

**Taco, Inc.**, 1160 Cranston Street, Cranston, RI 02920 | Tel: (401) 942-8000 | FAX: (401) 942-2360

**Taco (Canada), Ltd.**, 8450 Lawson Road, Suite #3, Milton, Ontario L9T 0J8 | Tel: (905) 564-9422 | FAX: (905) 564-9436

Visit our web site: [www.TacoComfort.com](http://www.TacoComfort.com) | Printed in USA | ©2016 Taco, Inc.

