

Replacement Parts List

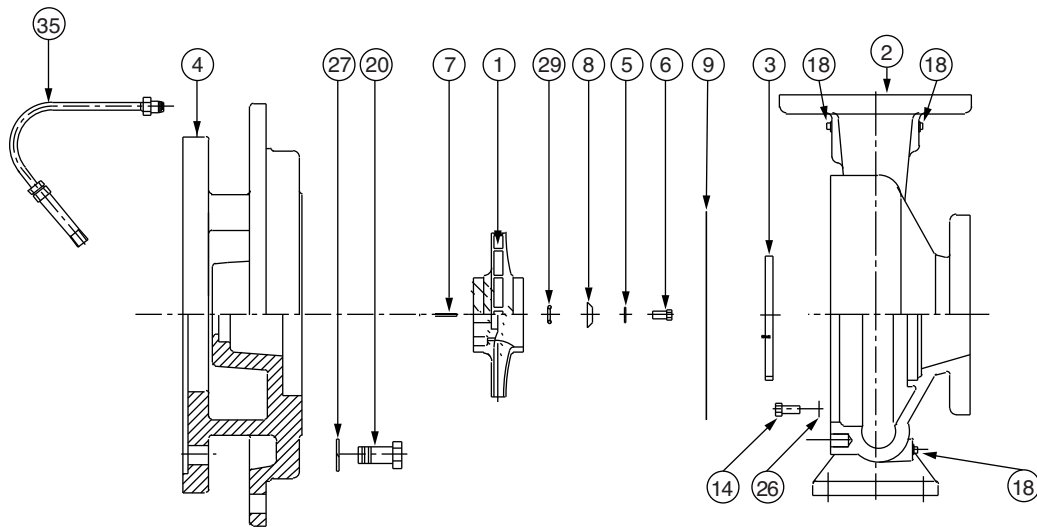
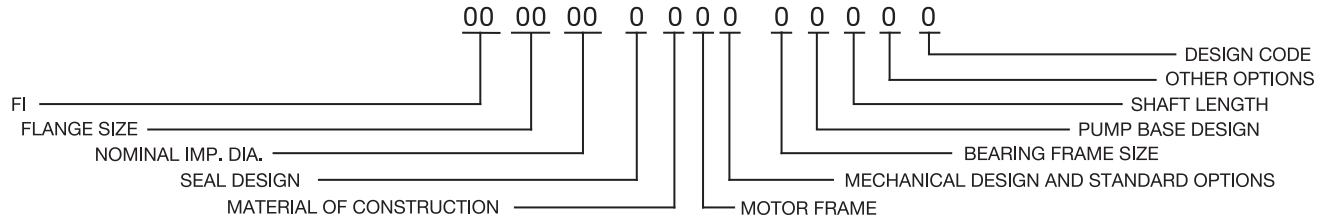
304-478

FI 1209C

SUPERSEDES: March 1, 2013

EFFECTIVE: September 21, 2016

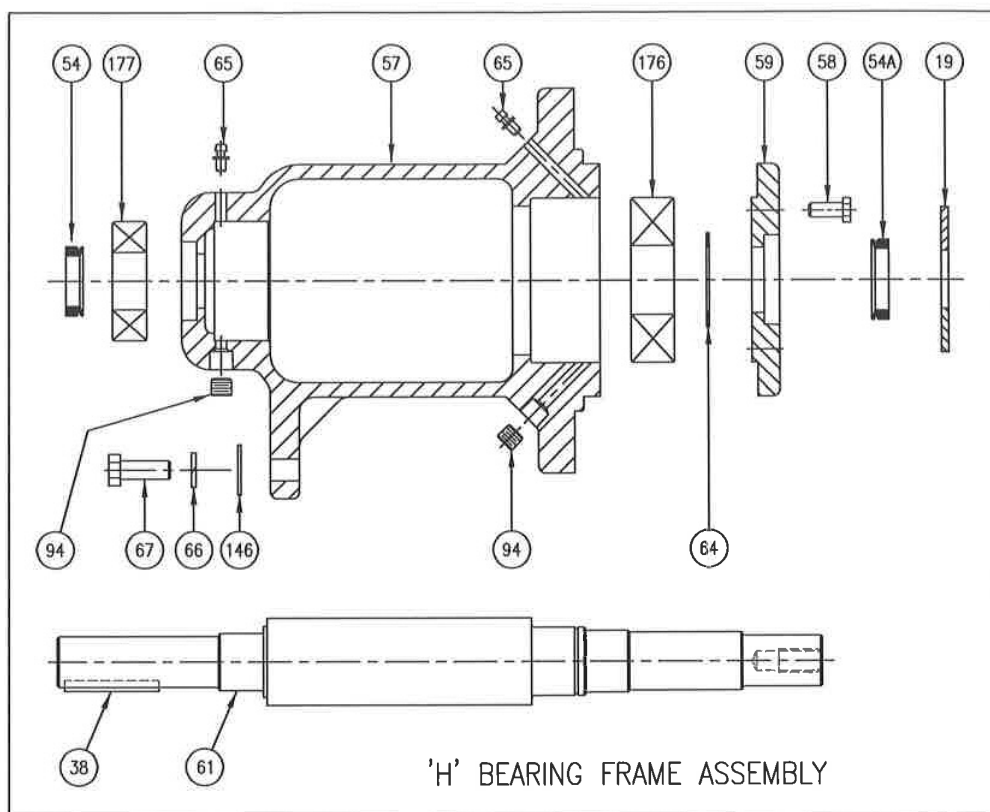
WHEN SELECTING AND ORDERING PARTS, ALWAYS REFER TO SERIAL NUMBER ON NAMEPLATE



ITEM NO.	NO. REQ.	DESCRIPTION	FI 1209C
			BEARING FRAME H
1	1	IMPELLER (CI)	953-4131RP
1	1	IMPELLER (BRZ)	953-4129RP
2	1	CASING (125#)(NO W/R)	953-4486RP
2	1	CASING (250#)(NO W/R)	953-4487RP
2	1	CASING (125#)(BRZ W/R)	953-4488RP
2	1	CASING (250#)(BRZ W/R)	953-4489RP
3	1(W/R)	WEAR RING (BRZ)	953-4132RP
5	1	DOWDY WASHER	951-2578RP
6	1	IMPELLER BOLT (SST)	3/8NC X 1-1/2"LG
7	1	IMPELLER KEY (SST)	3/16 X 3/16 X 1-1/8"LG
8	1	IMPELLER WASHER	953-828RP
9	1	GASKET (CASING)	953-4383RP
14	12	CASING BOLT (ST)	3/8NC X 1-1/8"LG
18	3	PIPE PLUG (STEEL)	1/4 NPT
26	12	CASING WASHER (ZN)	3/8
29	1	IMPELLER GASKET	953-830RP
4	1	COVER, 125#	953-4347RP
		COVER, 250#	953-4377RP
20	4	BEARING FRAME BOLT	3/8NC X 1"LG
27	4	BEARING FRAME WASHER	1/2
35	1	TUBE KIT	951-1547RP

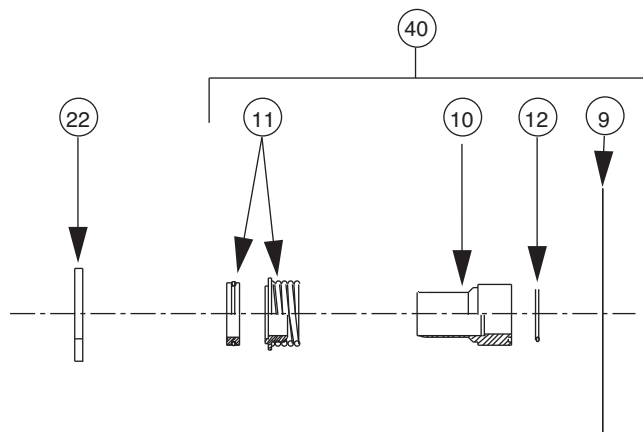
AW-1122 REV -

FI 'H' Frame Replacement Parts



ITEM NO	NO. REQ.	DESCRIPTION	STANDARD SEALED BEARINGS	OPTIONAL GREASEABLE BEARINGS	REMARKS
			PART NO.	PART NO.	
—	1	FRAME ASSEMBLY (CS)	953-2218RP	953-2219RP	CARBON STEEL SHAFT
—	1	FRAME ASSEMBLY (SS)	953-2224RP	953-2225RP	STAINLESS STEEL SHAFT
57	1	HOUSING	953-2205RP	953-2200RP	
61	1	SHAFT (CS)	953-2202RP	953-2202RP	CARBON STEEL
61	1	SHAFT (SS)	953-2204RP	953-2204RP	STAINLESS STEEL
59	1	END CAP	953-2201RP	953-2201RP	
67	1	BOLT, FOOT SUPPORT	10-215RP	10-215RP	
66	1	LOCKWASHER, FOOT SUPPORT	14-101RP	14-101RP	
146	1	FLAT WASHER, FOOT SUPPORT	14-316RP	14-316RP	
38	1	KEY-SHAFT	13-103RP	13-103RP	
176	1	BALL BEARING, FRONT (THRUST)	820-1039RP	820-067RP	
177	1	BALL BEARING, REAR (RADIAL)	953-2216RP	953-2482RP	
19	1	DEFLECTOR	900-043RP	900-043RP	
64	1	RETAINING RING	15-125RP	15-125RP	
58	4	HEX HEAD BOLT, END CAP	10-244RP	10-244RP	
54	1	V RING SEAL, REAR	953-1575-5RP	953-1575-5RP	
54A	1	V RING SEAL, FRONT	953-1575-2RP	953-1575-2RP	
65	2	GREASE FITTING	-----	15-203RP	
94	2	PIPE PLUG	-----	16-140RP	

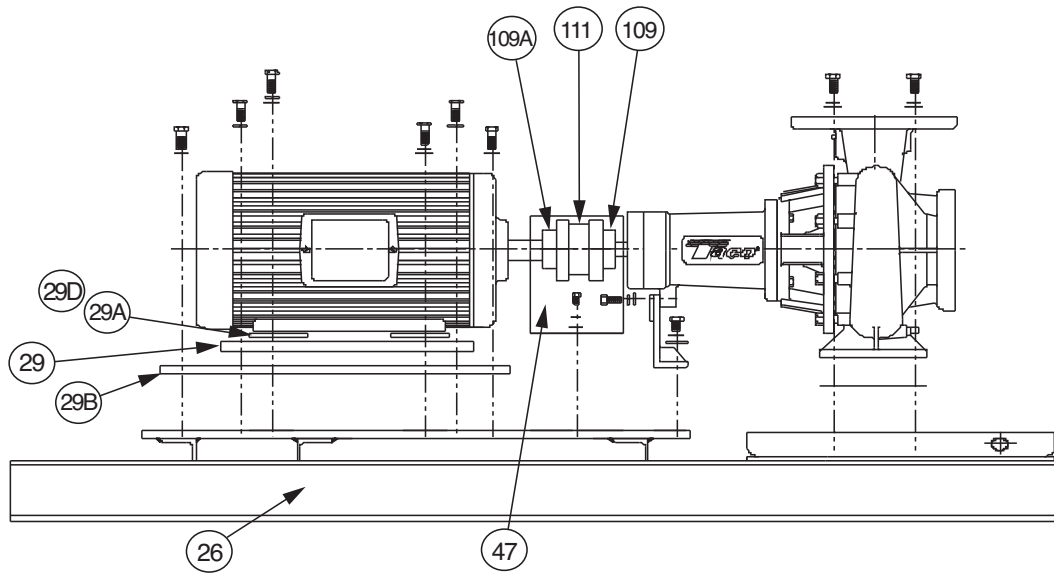
FI Series Seal Replacement Parts (EPT)



1206, 1506, 2506			1206, 1506, 2506		
1207, 1507 2007	2507, 3007, 4075, 4007, 5007		1207, 1507 2007	2507, 3007, 4075, 4007, 5007	
	2508			2508	
1209C 2009C 2509C	1509, 2009, 2009C, 2509, 2509C, 3009, 4009, 5009, 5095, 6009		1209C 2009C 2509C	1509, 2009, 2009C, 2509, 2509C, 3009, 4009, 5009, 5095, 6009	
2510C	2510		2510C	2510	
	1511, 2511, 3011, 4011, 4011C 5011, 6011			1511, 2511, 3011, 4011, 4011C 5011, 6011	
	2513, 3013 4013	5013, 6013		2513, 3013 4013	5013, 6013

ITEM NO.	NO. REQ.	DESCRIPTION	BEARING FRAME			BEARING FRAME		
			H	J	L	H	J	L
			MECHANICAL DESIGN (125#)			MECHANICAL DESIGN (250#)		
9	1	GASKET (CASING)	SEE PAGE 1	SEE PAGE 1	SEE PAGE 1	SEE PAGE 1	SEE PAGE 1	SEE PAGE 1
10	1	SLEEVE (SS)	953-1118RP	953-1170RP	953-1172RP	953-1892RP	953-1891RP	953-1890RP
10	1	SLEEVE (BRZ)	953-1119RP	953-1171RP	953-1173RP	953-1861RP	953-1887RP	953-1888RP
11	1	SEAL (TYPE B)	951-3157RP	951-3158RP	951-2966RP	951-3766RP	951-5158RP	951-5151RP
11	1	SEAL (TYPE D)	951-3159RP	951-3160RP	951-2967RP	951-3781RP	951-5159RP	951-5152RP
11	1	SEAL (TYPE E)	951-3161RP	951-3162RP	951-2968RP	951-3782RP	951-5160RP	951-5153RP
12	1	SLEEVE "O"-RING	592-525RP	951-3042RP	951-5277RP	592-525RP	951-3042RP	951-5277RP
22	1	DEFLECTOR	900-043RP	951-3040RP	951-3065RP	900-043RP	951-3040RP	951-3065RP
40	1	SEAL KIT (TYPE B) SS	953-1549-1RP	953-1549-4RP	953-1549-14RP	953-1549-7RP	953-1549-10RP	953-1549-17RP
40	1	SEAL KIT (TYPE B) BRZ	953-1549-1BRP	953-1549-4BRP	953-1549-14BRP	953-1549-7BRP	953-1549-10BRP	953-1549-17BRP
40	1	SEAL KIT (TYPE D) SS	953-1549-2RP	953-1549-5RP	953-1549-15RP	953-1549-8RP	953-1549-11RP	953-1549-18RP
40	1	SEAL KIT (TYPE D) BRZ	953-1549-2BRP	953-1549-5BRP	953-1549-15BRP	953-1549-8BRP	953-1549-11BRP	953-1549-18BRP
40	1	SEAL KIT (TYPE E) SS	953-1549-3RP	953-1549-6RP	953-1549-16RP	953-1549-9RP	953-1549-12RP	953-1549-19RP
40	1	SEAL KIT (TYPE E) BRZ	953-1549-3BRP	953-1549-6BRP	953-1549-16BRP	953-1549-9BRP	953-1549-12BRP	953-1549-19BRP

Motor Replacement Parts



NOTE: INCLUDE 'RP' AT END OF P/N

ITEM NO.	NO. REQ.	DESCRIPTION	FI 1209C MOTOR FRAMES (NEMA STD.) "T"												
			56	143T	145T	182T	184T	213T	215T	254T	256T	284TS	286TS	324T	326T
47	1	COUPLER GUARD	951-3696	951-3696	951-3696	951-3696	951-3696	951-3077	951-3077	951-3079	951-3079	951-3079	951-3079	951-3079	951-3079
109	1	PUMP COUPLER HALF	953-2427	953-2433	953-2433	953-2433	953-2433	953-2433	953-2433	953-2439	953-2439	953-3281	953-3281	953-3281	953-3281
109A	1	MTR. COUPLER HALF	953-2425	953-2433	953-2433	953-2435	953-2435	953-2437	953-2437	953-2445	953-2445	953-2454	953-2454	953-2454	953-2454
111	1	COUPLER INSERT	953-2424	953-2430	953-2430	953-2430	953-2430	953-2430	953-2430	953-2438	953-2438	953-2446	953-2446	953-2446	953-2446
*	1	OSHA COUPLER GUARD	953-1914	953-1914	953-1914	953-1914	953-1914	953-1914	953-1914	953-1915	953-1915	953-1915	953-1915	953-1915	953-1915
26	1	BASE	953-4708	953-4708	953-4708	953-4708	953-4708	953-4707	953-4707	953-4711	953-4711	953-4711	953-4711	953-4711	953-4711
29	2	SPACER (1ST) MOTOR	953-5203	953-5201	953-5201	-	-	-	-	953-6291	953-6291	953-6291	953-6291	-	-
29B	2	SPACER (2ND) MOTOR	-	-	-	-	-	-	-	-	-	-	-	-	-
29A	4	SPACER RD (1ST) MOTOR	-	-	-	-	-	953-2229	953-2229	-	-	-	-	-	-
29D	4	SPACER RD (2ND) MOTOR	-	-	-	-	-	-	-	953-2228	953-2228	-	-	-	-

AW-1123 REV -

Taco Comfort Solutions™ A Taco Family Company

Taco, Inc., 1160 Cranston Street, Cranston, RI 02920 | Tel: (401) 942-8000 | FAX: (401) 942-2360

Taco (Canada), Ltd., 8450 Lawson Road, Suite #3, Milton, Ontario L9T 0J8 | Tel: (905) 564-9422 | FAX: (905) 564-9436

Visit our web site: www.TacoComfort.com | Printed in USA | ©2016 Taco, Inc.

