



A Taco Group Company

Effective: November 24, 2024

Submittal Data Information

101-125

3-Speed Cartridge Circulators

Supersedes: June 26, 2015

Job: _____ Engineer: _____ Contractor: _____ Rep: _____

ITEM NO.	MODEL NO.	

Features

- 3-Speed Switch
- Fine tune to system requirements
- Highest performance & starting torque in class
- Heavy duty construction for longer life
- 4-bolt universal flange (0010 only)
- Removable high-flow Integral Flow Check (IFC)[®]
 - Prevents gravity flow
 - Reduces installation costs
 - Improves pump performance
- Replaceable cartridge design
- Quiet, efficient operation
- Self lubricating, no mechanical seal
- Wide range of applications
- Cast Iron or Stainless Steel, flanged construction

Materials of Construction

Casing:.....0015
(Cast Iron or Stainless Steel)

Casing:.....0010
(Only Cast Iron)

Integral Flow Check (IFC)[®]:

- Body, Plunger.....Acetal
- O-ring Seal.....EPDM
- Spring.....Stainless Steel

Stator Housing:.....Steel

Cartridge:.....Stainless Steel

Impeller:.....Non-Metallic

Shaft:.....Ceramic

Bearings:.....Carbon

O-Ring & Gaskets:.....EPDM

Model Nomenclature

F – Cast Iron, Flanged

SF – Stainless Steel, Flanged

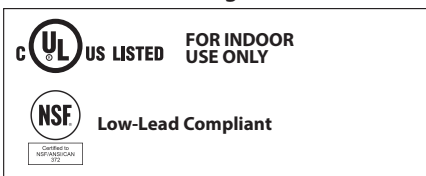
MS – 3-Speed Switch

IFC – Integral Flow Check

Performance Data

	0015	0010
Maximum Flow (GPM):	18	31
Maximum Head (FT):	17	11
Minimum Fluid Temperature: 40°F (4°C)		
Maximum Fluid Temperature: 230°F (110°C)		
Maximum Working Pressure: 125 psi		
Connection Sizes: 3/4", 1", 1-1/4", 1-1/2" Flanged		

Certifications & Listings



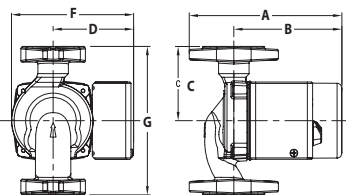
Application

The **0015 3-Speed pump** is specifically designed for the wide range of flow and head requirements of today's hydronic heating systems. Its 3-Speed switching capability provides fine tuning control to match a wide combination of tube diameters and length of runs. The 0015 3-Speed is a direct replacement for the Grundfos UPS 15-58 3-Speed. The 0015 delivers the highest starting torque in its class and includes a removable, uni-body Integral Flow Check (IFC)[®] that prevents gravity flow, reduces installation costs and improves pump performance. The Stainless Steel 0015 should be used on open, fresh water systems and replaces Grundfos UPS 15-35FC & 15-55FC.

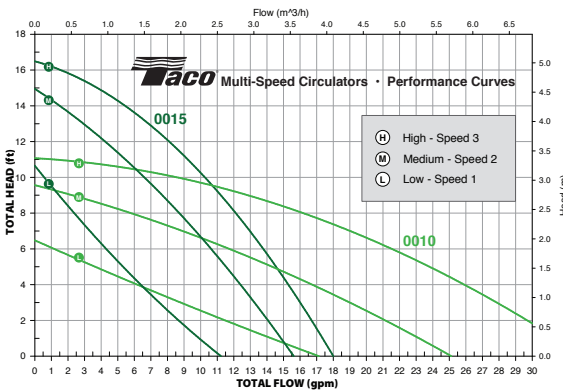
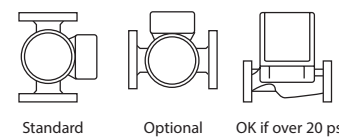
The **0010 3-Speed Service pump** is designed as an ideal replacement circulator for service contractors to use on any emergency "no-heat" call. The 0010 3-Speed replaces most commonly used circulators. Simply install it and set the speed to match the original pump performance. The handy new four bolt flange matches up to any pump regardless of style, type or age.

Pump Dimensions & Weights * Stainless Steel

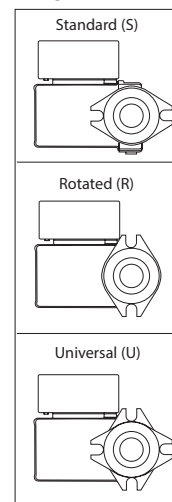
Models	Flange Code	A		B		C		D		F		G		Ship Wt.	
		in.	mm	in.	mm	in.	mm	in.	mm	in.	mm	in.	mm	lbs.	Kg
0015-MSF3-IFC	S	6-1/2	165	4-5/8	118	3-3/16	81	3-7/16	78	5-3/8	137	6-3/8	162	8	3.5
0015-MSF3-IFC*	S	6-1/2	165	4-5/8	118	3-3/16	81	3-7/16	78	5-3/8	137	6-3/8	162	8	3.5
0015-MSF3-1 IFC	R	6	152	4-5/8	118	3-3/16	81	3-7/16	78	5-3/8	137	6-3/8	162	8	3.5
0015-MSF3-1 IFC*	R	6	152	4-5/8	118	3-3/16	81	3-7/16	78	5-3/8	137	6-3/8	162	8	3.5
0010-MSF2-IFC	U	6-11/16	170	4-3/4	120	3-3/16	81	3-7/16	78	5-3/8	137	6-3/8	162	10	4.5



Mounting Positions



Flange Orientation



Electrical Data

Model	Volts	Hz	Ph	Amps			RPM (Speed 3)	HP
				Speed 1	Speed 2	Speed 3		
0015	115	60	1	.54	.74	.85	3250	1/20
0010	115	60	1	.57	.79	.91	3250	1/20

Motor Type: Permanent Split Capacitor Impedance Protected



A Taco Group Company

Taco Inc., 1160 Cranston Street, Cranston, RI 02920 / (401) 942-8000
Taco (Canada) Ltd., 8450 Lawson Road, Unit #3, Milton, Ontario L9T 0J8 / (905) 564-9422
www.TacoComfort.com