

Submittal Data Information

Double Wall Heat Exchangers

201-077

10" Diameter Liquid

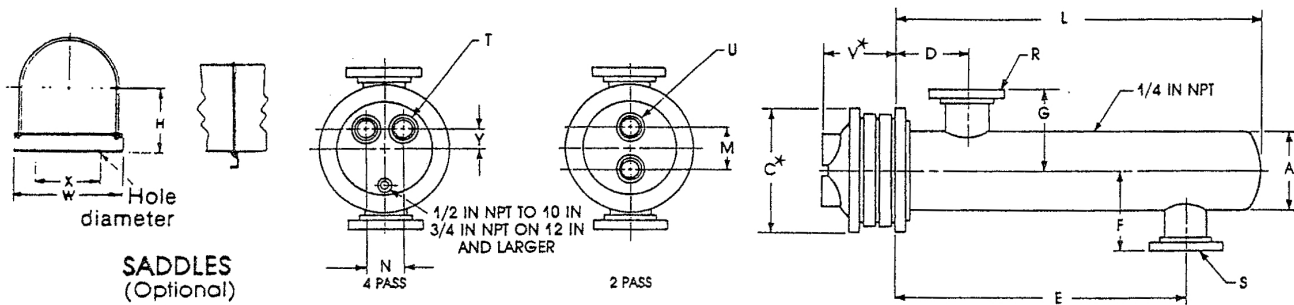
SUPERSEDES: January 2, 1991

EFFECTIVE: April 30, 2018

Item No	Model No	Pass	GPM Tubes	Temp. In	Temp. Out	P.D. Tubes	Vel. Tubes	GPM Shell	Temp. In	Temp. Out	P.D. Shell	Vel. Shell

Tube Fluid _____

Shell Fluid _____



DIMENSIONS: 10 Inch Diameter

Model Number		Cast Iron Heads							Dimensions (inches)								Heating Surface (sq. ft.)	Shipping Weight (lbs.)
2 Pass	4 Pass	2 Pass M	4 Pass U	N	T	Y	V*	A	C*	D	E	F	G	L	R	S		
G10204L	G10404L	6 1/4	3T	5 1/2	3T	2 1/4	5 1/8	10 3/4	16	7 1/4	16 1/2	10 1/2	10 1/2	24	4F	4F	53.6	356
G10206L	G10406L	6 1/4	3T	5 1/2	3T	2 1/4	5 1/8	10 3/4	16	7 1/4	28 1/2	10 1/2	10 1/2	36	4F	4F	81.8	409
G10208L	G10408L	6 1/4	3T	5 1/2	3T	2 1/4	5 1/8	10 3/4	16	7 1/4	40 1/2	10 1/2	10 1/2	48	4F	4F	110.0	471
G10210L	G10410L	6 1/4	3T	5 1/2	3T	2 1/4	5 1/8	10 3/4	16	7 1/4	52 1/2	10 1/2	10 1/2	60	4F	4F	138.4	532
G10212L	G10412L	6 1/4	3T	5 1/2	3T	2 1/4	5 1/8	10 3/4	16	7 1/4	64 1/2	10 1/2	10 1/2	72	4F	4F	166.6	593
G10214L	G10414L	6 1/4	3T	5 1/2	3T	2 1/4	5 1/8	10 3/4	16	7 1/4	76 1/2	10 1/2	10 1/2	84	4F	4F	195.0	654
G10216L	G10416L	6 1/4	3T	5 1/2	3T	2 1/4	5 1/8	10 3/4	16	7 1/4	88 1/2	10 1/2	10 1/2	96	4F	4F	223.2	716
G10218L	G10418L	6 1/4	3T	5 1/2	3T	2 1/4	5 1/8	10 3/4	16	7 1/4	100 1/2	10 1/2	10 1/2	108	4F	4F	251.4	777
G10220L	G10420L	6 1/4	3T	5 1/2	3T	2 1/4	5 1/8	10 3/4	16	7 1/4	112 1/2	10 1/2	10 1/2	120	4F	4F	279.8	838

SADDLE DIMENSIONS: H-8 3/8"; W-13 3/8"; X-10"; Hole Dia.-3/4"

MATERIALS OF CONSTRUCTION (Unless otherwise indicated, standard will be furnished.)

	Standard
Shell	Steel
Head	Cast Iron 4-10"
	Fabricated Steel 12-30"
Tubes	3/4 x Double Wall Copper/Copper
Tube Sheet Tube Side	Steel
Tube Sheet Shell Side	Steel
Separators	Steel
Working Pressure	150 PSIG (ASME)
Max. Temperature	375°F

	Optional
	304ss, 316ss
	* Cast Bronze, Fabricated Steel, Fabricated 304ss/316ss
	Fabricated 304ss/316ss
	3/4 x Double Wall Cu-Ni/Cu-Ni
	304ss, 316ss
	304ss, 316ss
	Brass, 304ss, 316ss, 90/10 Cu Ni
	Consult Factory
	Consult Factory

* When choosing any option with fabricated head type, refer to submittal 201-022 for head dimensions. Fabricated heads will feature flanged connections.

All dimensions shown are subject to change and should not be used for pre-piping. Contact your local Taco representative should certified dimensional drawings be required.

