

Submittal Data Information

Double Wall Heat Exchangers

201-075

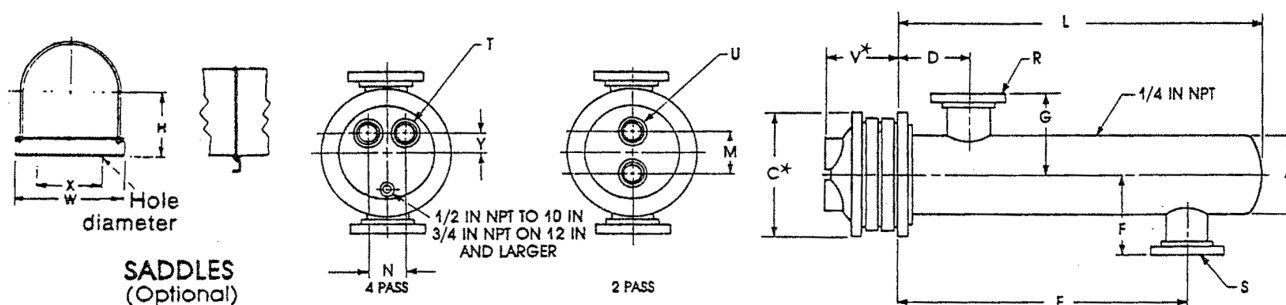
6" Diameter Liquid

SUPERSEDES: January 2, 1991

EFFECTIVE: April 30, 2018

| Item No | Model No | Pass | GPM Tubes | Temp. In | Temp. Out | P.D. Tubes | Vel. Tubes | GPM Shell | Temp. In | Temp. Out | P.D. Shell | Vel. Shell |
|---------|----------|------|-----------|----------|-----------|------------|------------|-----------|----------|-----------|------------|------------|
| | | | | | | | | | | | | |

Tube Fluid _____ Shell Fluid _____



DIMENSIONS: 6 Inch Diameter

| Model Number | | Cast Iron Heads | | | | | | Dimensions (inches) | | | | | | | | | | Heating Surface (sq. ft.) | Shipping Weight (lbs.) |
|--------------|--------|-----------------|----|--------|-----|----|----|---------------------|----|---|-----|----|----|-----|-----|-----|------|---------------------------|------------------------|
| 2 Pass | 4 Pass | 2 Pass | | 4 Pass | | | | 2 and 4 Pass | | | | | | | | | | | |
| | | M | U | N | T | Y | V* | A | C* | D | E | F | G | L | R | S | | | |
| G6204L | G6404L | 4 | 2T | 3¾ | 1½T | 1¼ | 3¾ | 6⅝ | 11 | 5 | 18 | 5⅞ | 5⅞ | 25 | 2½T | 2½T | 18.2 | 138 | |
| G6206L | G6406L | 4 | 2T | 3¾ | 1½T | 1¼ | 3¾ | 6⅝ | 11 | 5 | 30 | 5⅞ | 5⅞ | 37 | 2½T | 2½T | 27.6 | 166 | |
| G6208L | G6408L | 4 | 2T | 3¾ | 1½T | 1¼ | 3¾ | 6⅝ | 11 | 5 | 42 | 5⅞ | 5⅞ | 49 | 2½T | 2½T | 37.0 | 200 | |
| G6210L | G6410L | 4 | 2T | 3¾ | 1½T | 1¼ | 3¾ | 6⅝ | 11 | 5 | 54 | 5⅞ | 5⅞ | 61 | 2½T | 2½T | 46.4 | 225 | |
| G6212L | G6412L | 4 | 2T | 3¾ | 1½T | 1¼ | 3¾ | 6⅝ | 11 | 5 | 66 | 5⅞ | 5⅞ | 73 | 2½T | 2½T | 55.8 | 253 | |
| G6214L | G6414L | 4 | 2T | 3¾ | 1½T | 1¼ | 3¾ | 6⅝ | 11 | 5 | 78 | 5⅞ | 5⅞ | 85 | 2½T | 2½T | 65.2 | 280 | |
| G6216L | G6416L | 4 | 2T | 3¾ | 1½T | 1¼ | 3¾ | 6⅝ | 11 | 5 | 90 | 5⅞ | 5⅞ | 97 | 2½T | 2½T | 74.6 | 308 | |
| G6218L | G6418L | 4 | 2T | 3¾ | 1½T | 1¼ | 3¾ | 6⅝ | 11 | 5 | 102 | 5⅞ | 5⅞ | 109 | 2½T | 2½T | 84.2 | 336 | |
| G6220L | G6420L | 4 | 2T | 3¾ | 1½T | 1¼ | 3¾ | 6⅝ | 11 | 5 | 114 | 5⅞ | 5⅞ | 121 | 2½T | 2½T | 93.6 | 364 | |

SADDLE DIMENSIONS: H-6'1 5/16; W-9'1/4; X-7'1/2; Hole Dia. -5/8

MATERIALS OF CONSTRUCTION (Unless otherwise indicated, standard will be furnished.)

| | Standard |
|-----------------------|--|
| Shell | Steel |
| Head | Cast Iron 4-10" Fabricated Steel 12-30" |
| Tubes | 3/4 x Double Wall Copper/Copper |
| Tube Sheet Tube Side | Steel |
| Tube Sheet Shell Side | Steel |
| Separators | Steel |
| Working Pressure | 150 PSIG (ASME) |
| Max. Temperature | 375°F |

Optional

| |
|---|
| 304ss, 316ss |
| * Cast Bronze, Fabricated Steel, Fabricated 304ss/316ss |
| Fabricated 304ss/316ss |
| 3/4 x Double Wall Cu-Ni/Cu-Ni |
| 304ss, 316ss |
| 304ss, 316ss |
| Brass, 304ss, 316ss, 90/10 Cu Ni |
| Consult Factory |
| Consult Factory |

* When choosing any option with fabricated head type, refer to submittal 201-022 for head dimensions. Fabricated heads will feature flanged connections.

All dimensions shown are subject to change and should not be used for pre-piping. Contact your local Taco representative should certified dimensional drawings be required.

