

# Submittal Data Information

## Double Wall Heat Exchangers

201-070

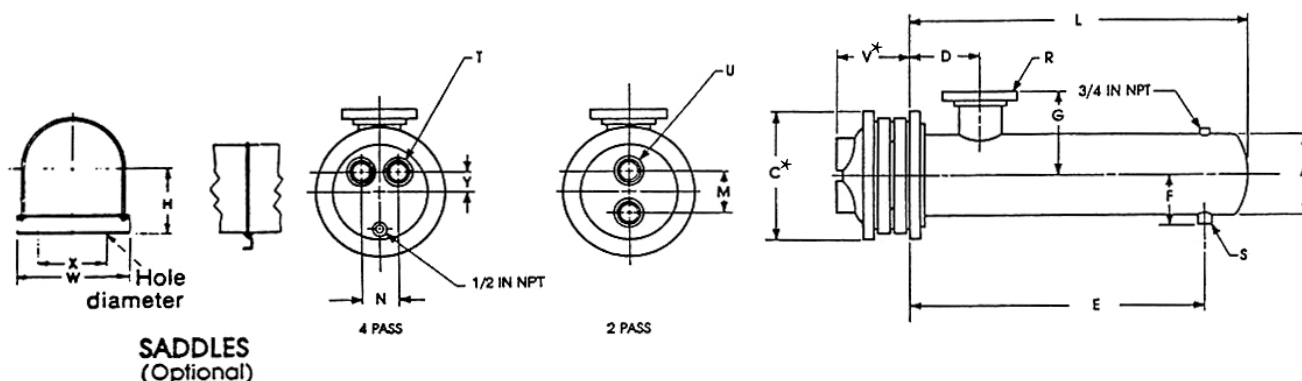
6" Diameter Steam

SUPERSEDES: February 15, 1993

EFFECTIVE: April 30, 2018

Job: \_\_\_\_\_

| Item No. | Model No. | Pass | GPM Tubes | Temp. In | Temp. Out | Steam Pressure Shell | Pressure Drop Tubes | Velocity Tubes |
|----------|-----------|------|-----------|----------|-----------|----------------------|---------------------|----------------|
|          |           |      |           |          |           |                      |                     |                |



### DIMENSIONS: 6 Inch Diameter

| Model Number |        | Cast Iron Heads |             |    |             |    |    | Dimensions (Inches) |    |   |                   |    |    |     |     |    |      | Heating Surface (sq. ft.) | Shipping Weight (lbs.) |
|--------------|--------|-----------------|-------------|----|-------------|----|----|---------------------|----|---|-------------------|----|----|-----|-----|----|------|---------------------------|------------------------|
| 2 Pass       | 4 Pass | 2 Pass<br>M     | 4 Pass<br>U | N  | 4 Pass<br>T | Y  | V* | A                   | C* | D | 2 and 4 Pass<br>E | F  | G  | L   | R   | S  |      |                           |                        |
| G6204S       | G6404S | 4               | 2T          | 3¾ | 1½T         | 1¼ | 3¾ | 6⅝                  | 11 | 5 | 18½               | 4⅞ | 4⅞ | 25  | 1½T | 1T | 17.7 | 138                       |                        |
| G6206S       | G6406S | 4               | 2T          | 3¾ | 1½T         | 1¼ | 3¾ | 6⅝                  | 11 | 5 | 30½               | 4⅞ | 4⅞ | 37  | 2T  | 1T | 27.4 | 156                       |                        |
| G6208S       | G6408S | 4               | 2T          | 3¾ | 1½T         | 1¼ | 3¾ | 6⅝                  | 11 | 5 | 42½               | 4⅞ | 5¼ | 49  | 2½T | 1T | 37.2 | 200                       |                        |
| G6210S       | G6410S | 4               | 2T          | 3¾ | 1½T         | 1¼ | 3¾ | 6⅝                  | 11 | 5 | 54½               | 4⅞ | 5¼ | 61  | 2½T | 1T | 47.0 | 225                       |                        |
| G6212S       | G6412S | 4               | 2T          | 3¾ | 1½T         | 1¼ | 3¾ | 6⅝                  | 11 | 5 | 66½               | 4⅞ | 5⅞ | 73  | 3T  | 1T | 56.8 | 253                       |                        |
| G6214S       | G6414S | 4               | 2T          | 3¾ | 1½T         | 1¼ | 3¾ | 6⅝                  | 11 | 5 | 78½               | 4⅞ | 5⅞ | 85  | 3T  | 1T | 66.8 | 280                       |                        |
| G6216S       | G6416S | 4               | 2T          | 3¾ | 1½T         | 1¼ | 3¾ | 6⅝                  | 11 | 5 | 90½               | 4⅞ | 5⅞ | 97  | 3T  | 1T | 76.6 | 310                       |                        |
| G6218S       | G6418S | 4               | 2T          | 3¾ | 1½T         | 1¼ | 3¾ | 6⅝                  | 11 | 5 | 102½              | 4⅞ | 5⅞ | 109 | 3T  | 1T | 86.4 | 336                       |                        |
| G6220S       | G6420S | 4               | 2T          | 3¾ | 1½T         | 1¼ | 3¾ | 6⅝                  | 11 | 5 | 114½              | 4⅞ | 5⅞ | 121 | 3T  | 1T | 96.2 | 364                       |                        |

SADDLE DIMENSIONS: H-6 1/16; W-9 1/4; X-7 1/2; Hole Dia.-5/8

MATERIALS OF CONSTRUCTION (Unless otherwise indicated, standard will be furnished.)

|                       | Standard                        |
|-----------------------|---------------------------------|
| Shell                 | Steel                           |
| Head                  | Cast Iron 4-10"                 |
|                       | Fabricated Steel 12-30"         |
| Tubes                 | 3/4 x Double Wall Copper/Copper |
| Tube Sheet Tube Side  | Steel                           |
| Tube Sheet Shell Side | Steel                           |
| Separators            | Steel                           |
| Working Pressure      | 150 PSIG (ASME)                 |
| Max. Temperature      | 375°F                           |

|  | Optional  |
|--|---|
|  | 304ss, 316ss  |
|  | * Cast Bronze, Fabricated Steel, Fabricated 304ss/316ss |
|  | Fabricated 304ss/316ss                                  |
|  | 3/4 x Double Wall Cu-Ni/Cu-Ni                           |
|  | 304ss, 316ss  |
|  | 304ss, 316ss  |
|  | Brass, 304ss, 316ss, 90/10 Cu Ni                        |
|  | Consult Factory   |
|  | Consult Factory   |

\* When choosing any option with fabricated head type, refer to submittal 201-022 for head dimensions. Fabricated heads will feature flanged connections.

All dimensions shown are subject to change and should not be used for pre-piping. Contact your local Taco representative should certified dimensional drawings be required.

