

Submittal Data Information

Double Wall Heat Exchangers

201-069

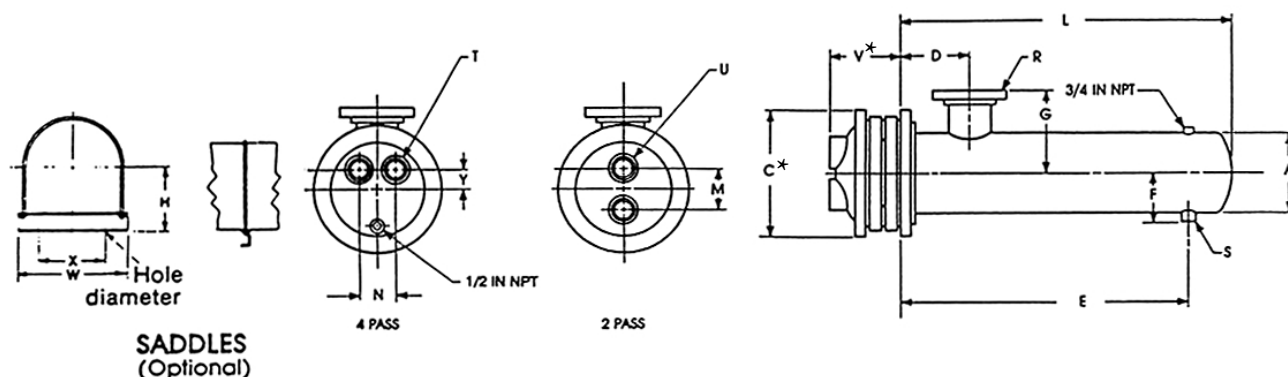
4" Diameter Steam

SUPERSEDES: February 15, 1993

EFFECTIVE: April 30, 2018

Job: _____

Item No.	Model No.	Pass	GPM Tubes	Temp. In	Temp. Out	Steam Pressure Shell	Pressure Drop Tubes	Velocity Tubes



DIMENSIONS: 4 Inch Diameter

Model Number		Cast Iron Heads						Dimensions (Inches)									Heating Surface (sq. ft.)	Shipping Weight (lbs.)
2 Pass	4 Pass	2 Pass		4 Pass				2 and 4 Pass										
		M	U	N	T	Y	V *	A	C *	D	E	F	G	L	R	S		
G4204S	G4404S	2½	1½T	2¾	1T	⅞	3½	4½	9	5	19½	4	4	24½	1¼T	1T	9.1	76
G4206S	G4406S	2½	1½T	2¾	1T	⅞	3½	4½	9	5	31½	4	4	36½	1¼T	1T	13.9	86
G4208S	G4408S	2½	1½T	2¾	1T	⅞	3½	4½	9	5	43½	4	4	48½	1¼T	1T	18.9	95
G4210S	G4410S	2½	1½T	2¾	1T	⅞	3½	4½	9	5	55½	4	4	60½	1¼T	1T	23.9	105
G4212S	G4412S	2½	1½T	2¾	1T	⅞	3½	4½	9	5	67½	4	3¾	72½	1½T	1T	28.7	115
G4214S	G4414S	2½	1½T	2¾	1T	⅞	3½	4½	9	5	79½	4	3¾	84½	1½T	1T	33.7	125
G4216S	G4416S	2½	1½T	2¾	1T	⅞	3½	4½	9	5	91½	4	3¾	96½	1½T	1T	38.5	135
G4218S	G4418S	2½	1½T	2¾	1T	⅞	3½	4½	9	5	103½	4	3¾	108½	1½T	1T	45.5	145
G4220S	G4420S	2½	1½T	2¾	1T	⅞	3½	4½	9	5	115½	4	3¾	120½	1½T	1T	48.3	155

SADDLE DIMENSIONS: H-5¼"; W-6½"; X-5½"; Hole Dia.-½"

MATERIALS OF CONSTRUCTION (Unless otherwise indicated, standard will be furnished.)

	Standard
Shell	Steel
Head	Cast Iron 4-10"
	Fabricated Steel 12-30"
Tubes	3/4 x Double Wall Copper/Copper
Tube Sheet Tube Side	Steel
Tube Sheet Shell Side	Steel
Separators	Steel
Working Pressure	150 PSIG (ASME)
Max. Temperature	375°F

Optional
304ss, 316ss
* Cast Bronze, Fabricated Steel, Fabricated 304ss/316ss
Fabricated 304ss/316ss
3/4 x Double Wall Cu-Ni/Cu-Ni
304ss, 316ss
304ss, 316ss
Brass, 304ss, 316ss, 90/10 Cu Ni
Consult Factory
Consult Factory

* When choosing any option with fabricated head type, refer to submittal 201-022 for head dimensions. Fabricated heads will feature flanged connections.

All dimensions shown are subject to change and should not be used for pre-piping. Contact your local Taco representative should certified dimensional drawings be required.

