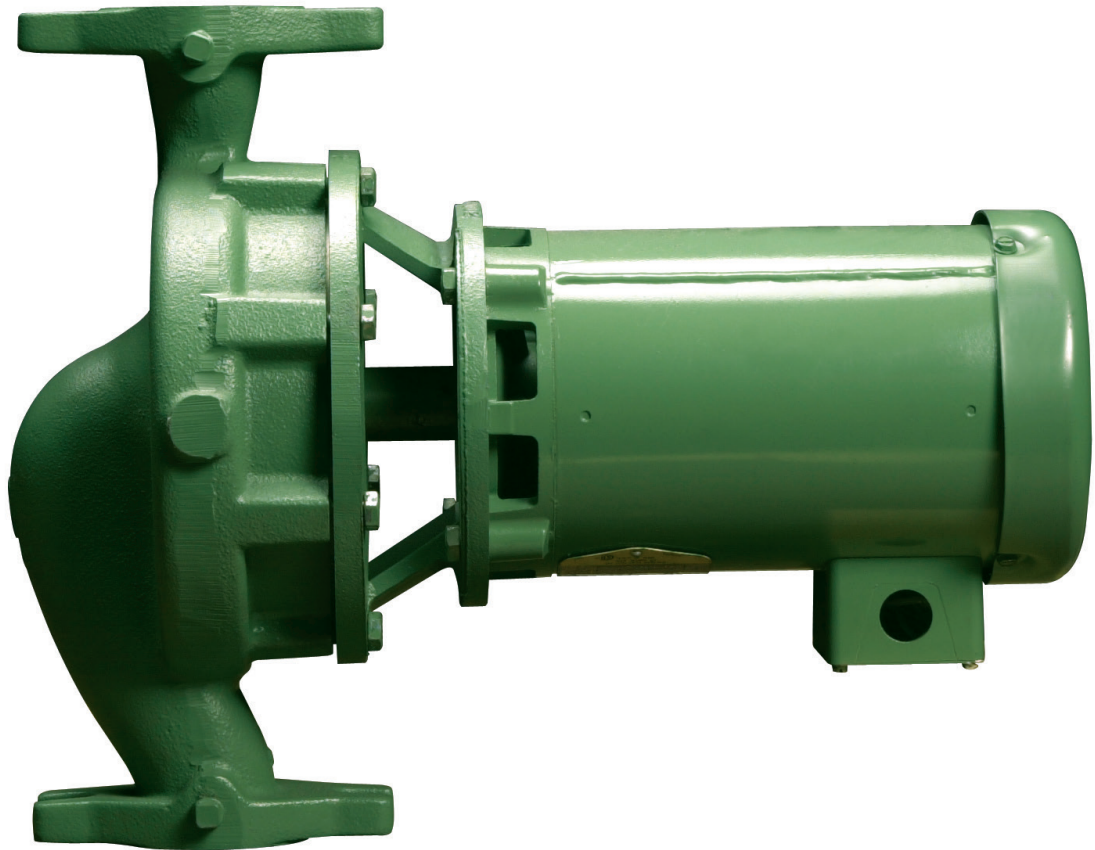


1900 Series In-Line Pumps



Features & Benefits

- 2 -

Quiet, dependable power and proven performance.

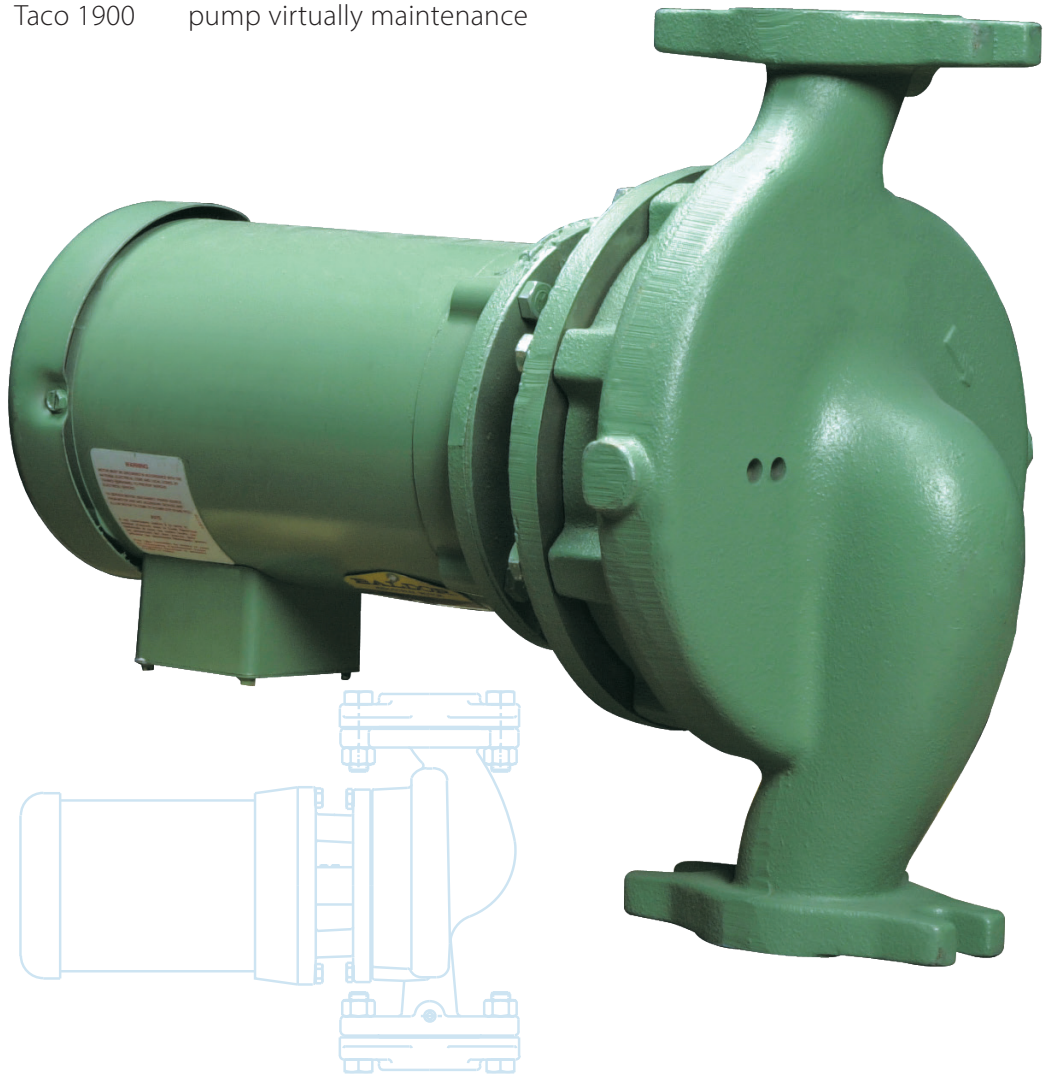
The 1900 Series close coupled in-line pumps meet the latest industry standards for hydraulic performance and reliability. Each is backed by Taco Comfort Solutions a worldwide leader in the design and manufacture of heating and cooling equipment since 1920. Taco 1900 Series pumps are available in five basic models ranging in size from 1-1/2" x 1-1/2" to 2" x 2" with a flow range of 10 to 250 GPM and head capabilities to 160 feet. Taco 1900

Series In-Line pumps are compact, energy efficient and can be installed anywhere in the piping layout.

The 1900 is designed to be self supported by the system piping (requiring no additional "strapping;" or external support) and can be mounted horizontally or vertically. Permanently sealed grease lubricated ball bearings in the motor make the 1900 Series pump virtually maintenance

free. All 1900 Series pumps are furnished with ceramic seals (standard) in order to meet a wide range of application requirements.

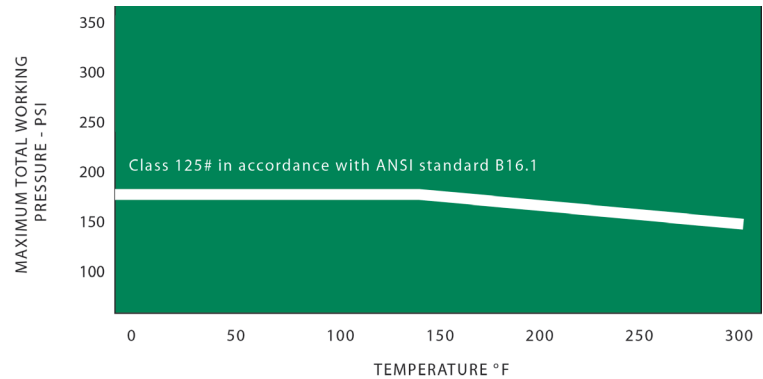
The standard mechanical seal is an industry-standard Type 21 design consisting of the rotating element (SS spring & retainer, EPT elastomers, and carbon mating ring) and ceramic seat. One seal size fits all models.



Applications

LoadMatch® Systems	Cooling Towers
Air Conditioning Systems	Golf Courses
Recirculation	Dry Cleaning Plants
Booster Service	Livestock Watering
Heating Systems	Bottle Washers
Laundry Equipment	Lawn Sprinklers

Pressure Temperature Ratings



Rear pull out design allows servicing of the pump without disturbing the piping.

NEMA Standard 56 Frame C Face Motor.

Standard ceramic seal meets the demands of a wide range of application requirements, and the Type 21 design facilitates quick and easy replacement simplifying maintenance.

1/4 NPT pressure tapings on suction and discharge connections.

Companion flanges included.

Features

Rugged Casing Design

The 1900 Series In-Line pump has a maximum operating pressure of 175psi, and a maximum operating temperature of 300°F. The 1900 Series pump is available in cast iron stainless-steel fitted construction or all stainless-steel construction , with NSF 61 Certification.

Pressure Tappings

Pressure tappings allow for differential pressure readings to be taken across the pump.

One Piece Enclosed Impeller

Dynamically balanced cast stainless-steel (304) impeller assures long life and higher pump efficiencies.

Standard Mechanical Seal

"1900" Series In-Line Pumps utilize a rType 21 seal design which facilitates quick and easy replacement. Available in ceramic (standard) or the new "Sealide C" (for more aggressive system fluids) ensures the flexibility to meet a wide range of application requirements. One size seal fits all models.

Motor

NEMA standard 56 frame C face motors*.

Parts Flexibility

Superior parts flexibility: one seal, and one shaft extension fits all models.

Factory Tested

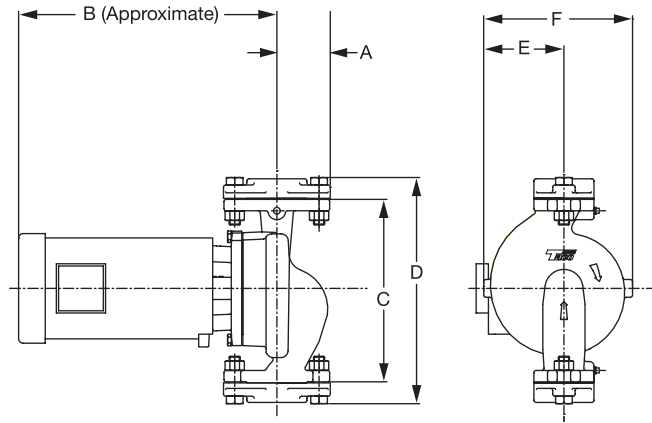
All "1900" Series In-Line pumps are factory tested, and are built in accordance with Hydraulic Institute Standards.

**3 HP 1750 rpm motors are TEFC, 5HP and 7 1/2 HP 3450 rpm motors are specially made OEM motors only available through authorized Taco distributors.*

Operating Specifications

Description	Standard	Optional
Pressure	175psi Maximum Operating Pressure (125psi Flanges Standard)	--
Temperature Mechanical Seal	250°F	300°F
Motors	NEMA Standard 56 Frame C Face	--
Metering Ports	Tapped Suction & Discharge Ports Provided as Standard	--
Factory Tested	100% Factory Tested and built in Accordance with Hydraulic Standards	--
Pump Flanges	Available with the Pump	--

Commercial Hydronic Application Information



Materials of Construction

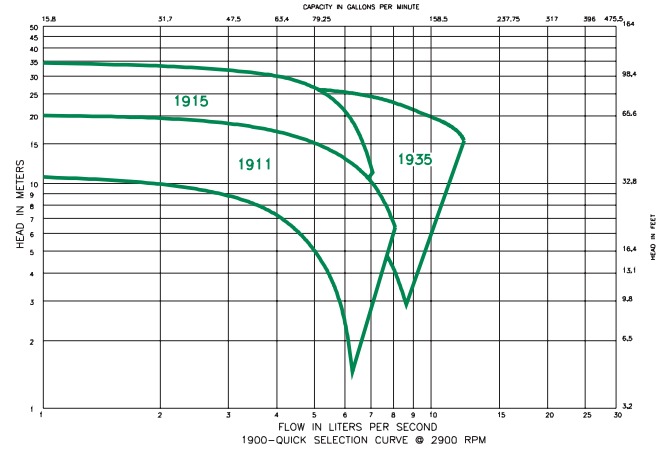
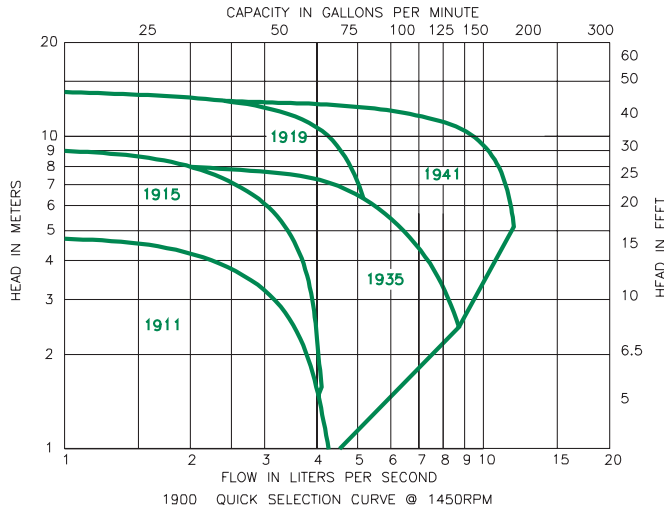
Description	Standard	Optional	NSF 61
Casing	Cast Iron	SS (304)	Stainless Steel
Impeller	One Piece Cast Stainless Steel	---	Stainless Steel
Shaft	SS (416)	---	SS (416)
Bracket	Cast Iron	Cast Iron with SS Face Plate	Cast Iron with SS Face Plate

Pump Dimensions & Weights

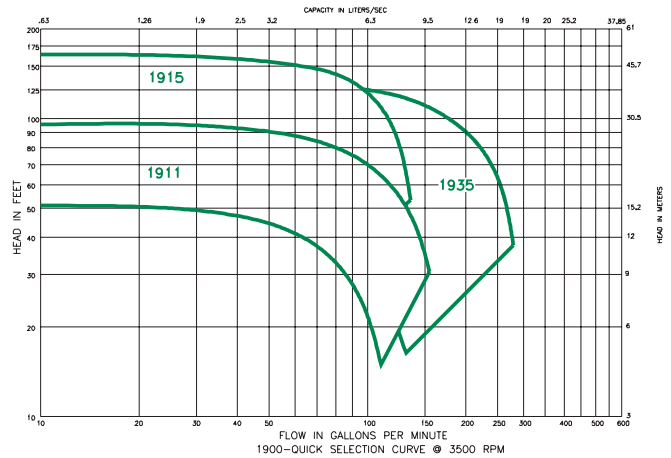
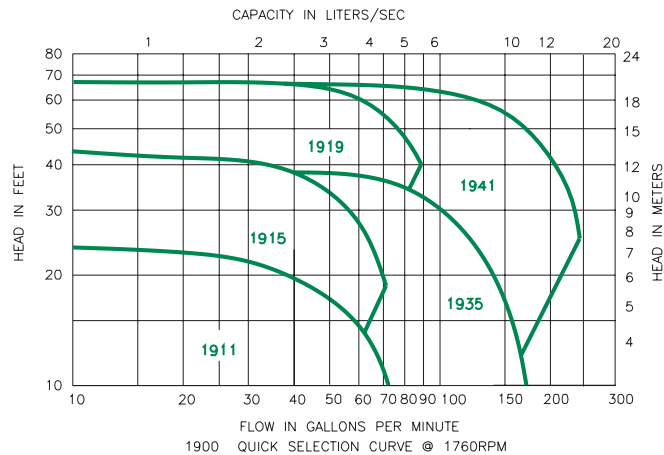
English dimensions are in inches. Metric dimensions are in millimeters. Metric data is presented in (). Do not use for construction purposes unless certified. * 1/4 HP AVAILABLE IN 1 PHASE ONLY.

Model No.	Speed	Flange Size	H.P.	Dimensions (inches)					
				A	B	C	D	E	F
1911	1760	1-1/2" (38)	1/4* (.19)	3" (75)	14.0 (356)	10-1/4 (260)	12-7/8 (327)	4.52 (115)	8.38 (213)
			1/3 (.25)		14.0 (356)				
			1/2 (.37)		14.0 (356)				
			1 (.75)		15.0 (381)				
	3500		1-1/2 (1.1)		15.5 (393)				
			2 (1.5)		15.5 (393)				
			3 (2.25)		15.5 (393)				
			5 (3.75)		16.5 (420)				
1915	1760	1-1/2" (38)	1/3 (.25)	3-1/8" (80)	14.0 (356)	13-1/2 (368)	16-1/8 (410)	5.15 (131)	9.75 (248)
			1/2 (.37)		14.0 (356)				
			3/4 (.56)		15.0 (381)				
			1 (.75)		16.0 (406)				
			1-1/2 (1.1)		16.0 (406)				
	3500		2 (1.5)		16.0 (406)				
			3 (2.325)		16.0 (406)				
			5 (3.75)		17.0 (432)				
			7.5 (5.6)		17.0 (432)				
					17.0 (432)				
1919	1760	2" (51)	3/4 (.56)	3" (75)	14.75 (375)	14-1/2 (419)	17-3/8 (441)	5.74 (146)	11.19 (284)
			1 (.75)		15.75 (483)				
			1 1/2 (1.1)		15.75 (400)				
			2 (1.5)		17.5 (445)				
1935	1760	2" (51)	1/2 (.37)	3-1/2" (89)	13.75 (350)	13-1/2 (343)	16-1/8 (410)	5.39 (137)	9.90 (251)
			3/4 (.56)		14.75 (375)				
			1 (.75)		15.75 (483)				
			1-1/2 (1.1)		15.75 (400)				
	3500		2 (1.5)		15.75 (400)				
			3 (2.37)		16.0 (406)				
			5 (3.75)		17.0 (432)				
			7.5 (5.6)		17.0 (432)				
1941	1760	2" (51)	1-1/2 (1.1)	3-5/8" (92)	15.75 (400)	16-1/2 (419)	19-1/2 (495)	6.97 (177)	13.83 (326)
			2 (1.5)		17.5 (445)				
			3 (2.37)		24 (610)				

1900 Series Performance Field 50 Hz



1900 Series Performance Field 60 Hz



Taco Inc., 1160 Cranston Street, Cranston, RI 02920 / (401) 942-8000 / Fax (401) 942-2360
 Taco (Canada) Ltd., 8450 Lawson Road, Unit #3, Milton, Ontario L9T 0J8 / (905) 564-9422 / Fax (905) 564-9436