

# 1900 Series Pump | Submittal Data

Submittal No: 301-244 | Model: 1919 | RPM: 1760 | Effective: May 30, 2024 | Supersedes: August 2, 2023

JOB: \_\_\_\_\_

REPRESENTATIVE: \_\_\_\_\_

ENGINEER: \_\_\_\_\_

CONTRACTOR: \_\_\_\_\_

## PRODUCT DATA

ITEM NO. \_\_\_\_\_ MODEL NO. 1919

IMPELLER DIAMETER \_\_\_\_\_ HORSEPOWER \_\_\_\_\_

GPM \_\_\_\_\_ RPM 1760 VOLTAGE \_\_\_\_\_

HEAD/FT \_\_\_\_\_ WEIGHT \_\_\_\_\_

NSF 61 CERTIFIED YES NO

## DIMENSIONS

Model No. | 1919

Flange Size (Suction x Discharge) | 2 (51)

HORSEPOWER (KW)	3/4 (0.56)	1 (0.75)	1.5 (1.12)	2 (1.50)
PUMP WEIGHT LBS (KG)	90 (41)	100 (45)	125 (57)	135 (61)
A	3.00 (76)			
B	14.75 (375)	15.75 (400)		17.50 (445)
C	14.50 (368)			
D	17.38 (441)			
E	5.74 (146)			
F	11.19 (284)			

English dimensions are in inches. Metric dimensions are in millimeters.  
Metric data is presented in ( ). Do not use for construction purposes unless certified.

## SPECIFICATIONS

### MOTORS

1760 RPM, Three Phase 208/230/460V, 60 Hz, Nema 56 C Frame Motors. Also available in Single Phase 115/208/230V. Motors are sealed ball bearing design, and require no maintenance.

### BODY

Cast iron with in-line flanged connections. Also available in optional all Stainless Steel (304). Companion flanges included with the pump. NSF61 All-SS models are also available.

### IMPELLER

One Piece Cast Stainless Steel (304), Closed, Dynamically Balanced Impeller.

### DRIVE

Close Coupled Direct Driven Pump.

### SHAFT

416 Stainless Steel Shaft.

### MECHANICAL SEAL

J. Crane Type 21 with carbon rotating element and ceramic stationary seat, with a maximum operating temperature of 250° F (121° C) furnished as standard. Optional "Sealide C" with silicon carbide rotating element and silicon carbide stationary seat is also available for systems with aggressive/ glycol fluids, with a maximum operating temperature of 300° F (149° C).

### WORKING PRESSURE

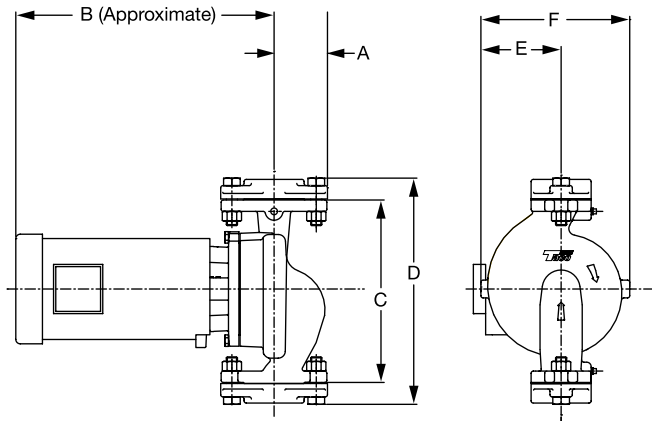
175 PSI (1207 kPa) in accordance with ASA B16.1.

### VARIABLE FREQUENCY DRIVE RECOMMENDATIONS

Pump Turn Down Ratio = 4:1

Recommended Minimum Drive Frequency = 15 Hz

**NOTE:** Pump flanges are tapped for gauges.

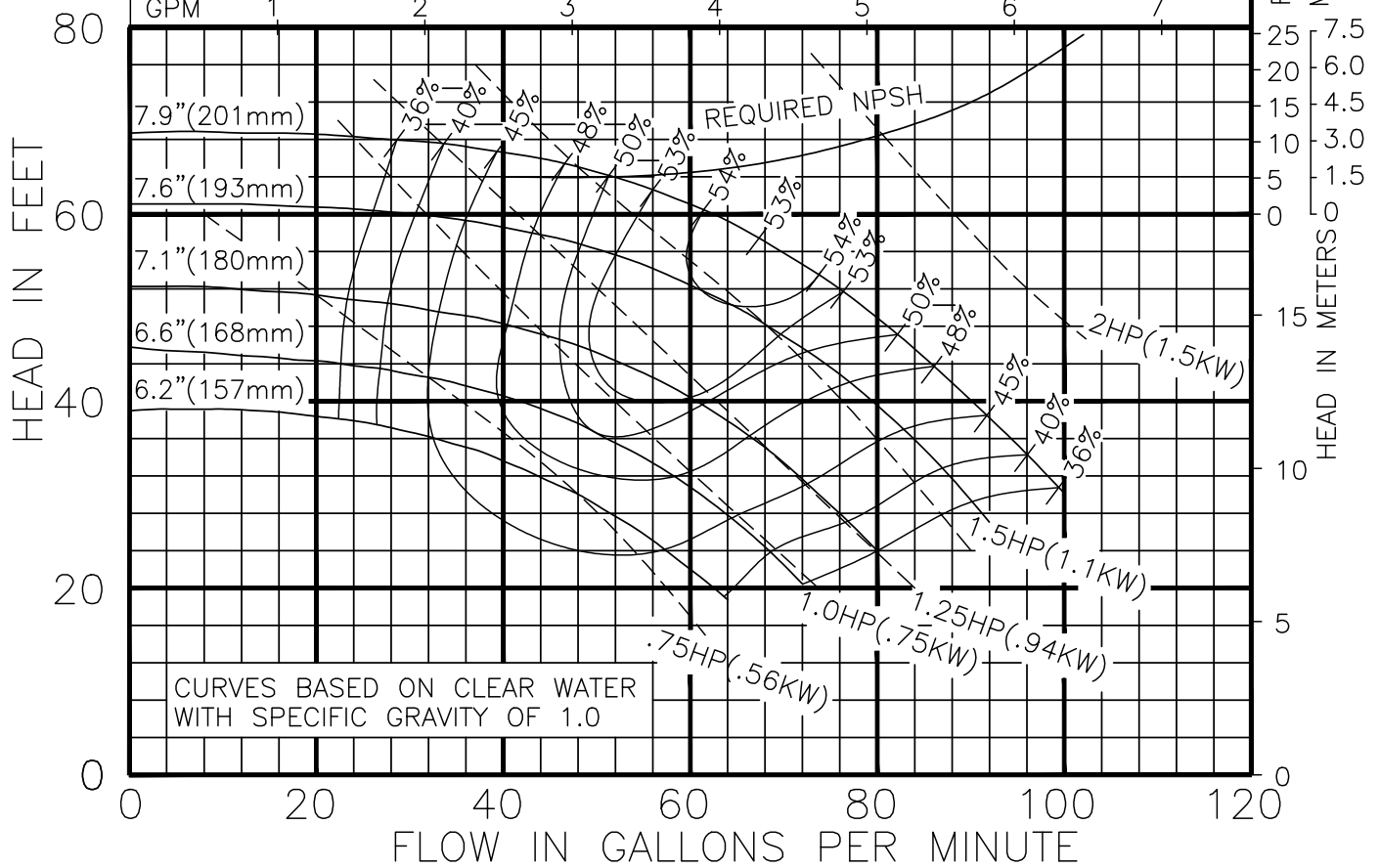






Model 1919 1760 RPM  
1900 Series, FEBRUARY, 9 2017

Curve no. 3071  
Min. Imp. Dia. 157mm  
Size 50.8mm



## COMMENTS