

# 1900 Series Pump | Submittal Data

Submittal No: 301-242 | Model: 1911 | RPM: 1760 | Effective: May 30, 2024 | Supersedes: August 2, 2023

JOB: \_\_\_\_\_

REPRESENTATIVE: \_\_\_\_\_

ENGINEER: \_\_\_\_\_

CONTRACTOR: \_\_\_\_\_

## PRODUCT DATA

ITEM NO. \_\_\_\_\_ MODEL NO. 1911

IMPELLER DIAMETER \_\_\_\_\_ HORSEPOWER \_\_\_\_\_

GPM \_\_\_\_\_ RPM 1760 VOLTAGE \_\_\_\_\_

HEAD/FT \_\_\_\_\_ WEIGHT \_\_\_\_\_

NSF 61 CERTIFIED YES NO

## DIMENSIONS

Model No. | 1911

Flange Size (Suction x Discharge) | 1 1/2 (38)

HORSEPOWER (KW)	1/4 (0.19)	1/3 (0.25)	1/2 (0.37)	1 (0.75)
PUMP WEIGHT LBS (KG)	60 (27)	62 (28)	65 (29)	78 (35)
A	3.00 (76)			
B	14.00 (356)			15.0 (381)
C	10.25 (260)			
D	12.88 (327)			
E	4.52 (115)			
F	8.38 (213)			

English dimensions are in inches. Metric dimensions are in millimeters.  
Metric data is presented in ( ). Do not use for construction purposes unless certified.

Configuration	DOE Basic Model Number	PEI Value		Energy Rating
Bare Pump	N/A	PEI <sub>d</sub>	N/A	N/A
Pump + Motor	N/A	PEI <sub>d</sub>	N/A	N/A

N/A=NOT WITHIN DOE SCOPE

## SPECIFICATIONS

### MOTORS

1760 RPM, Three Phase 208/230/460V, 60 Hz, Nema 56 C Frame Motors. Also available in Single Phase 115/208/230V. Motors are sealed ball bearing design, and require no maintenance.

### BODY

Cast iron with in-line flanged connections. Also available in optional all Stainless Steel (304). Companion flanges included with the pump. NSF61 All-SS models are also available.

### IMPELLER

One Piece Cast Stainless Steel (304), Closed, Dynamically Balanced Impeller.

### DRIVE

Close Coupled Direct Driven Pump.

### SHAFT

416 Stainless Steel Shaft.

### MECHANICAL SEAL

J. Crane Type 21 with carbon rotating element and ceramic stationary seat, with a maximum operating temperature of 250° F (121° C) furnished as standard. Optional "Sealide C" with silicon carbide rotating element and silicon carbide stationary seat is also available for systems with aggressive/glycol fluids, with a maximum operating temperature of 300° F (149° C).

### WORKING PRESSURE

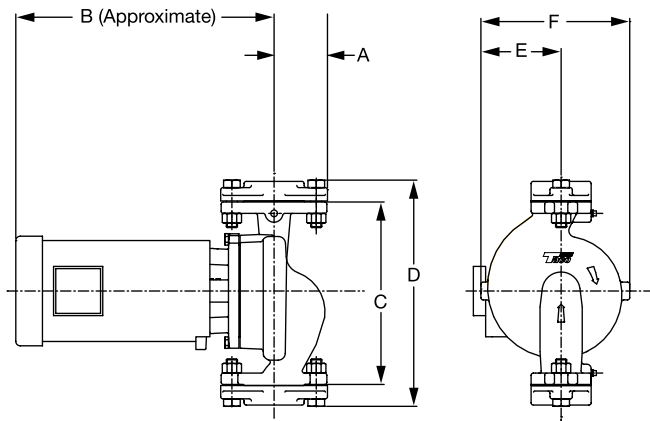
175 PSI (1207 kPa) in accordance with ASA B16.1.

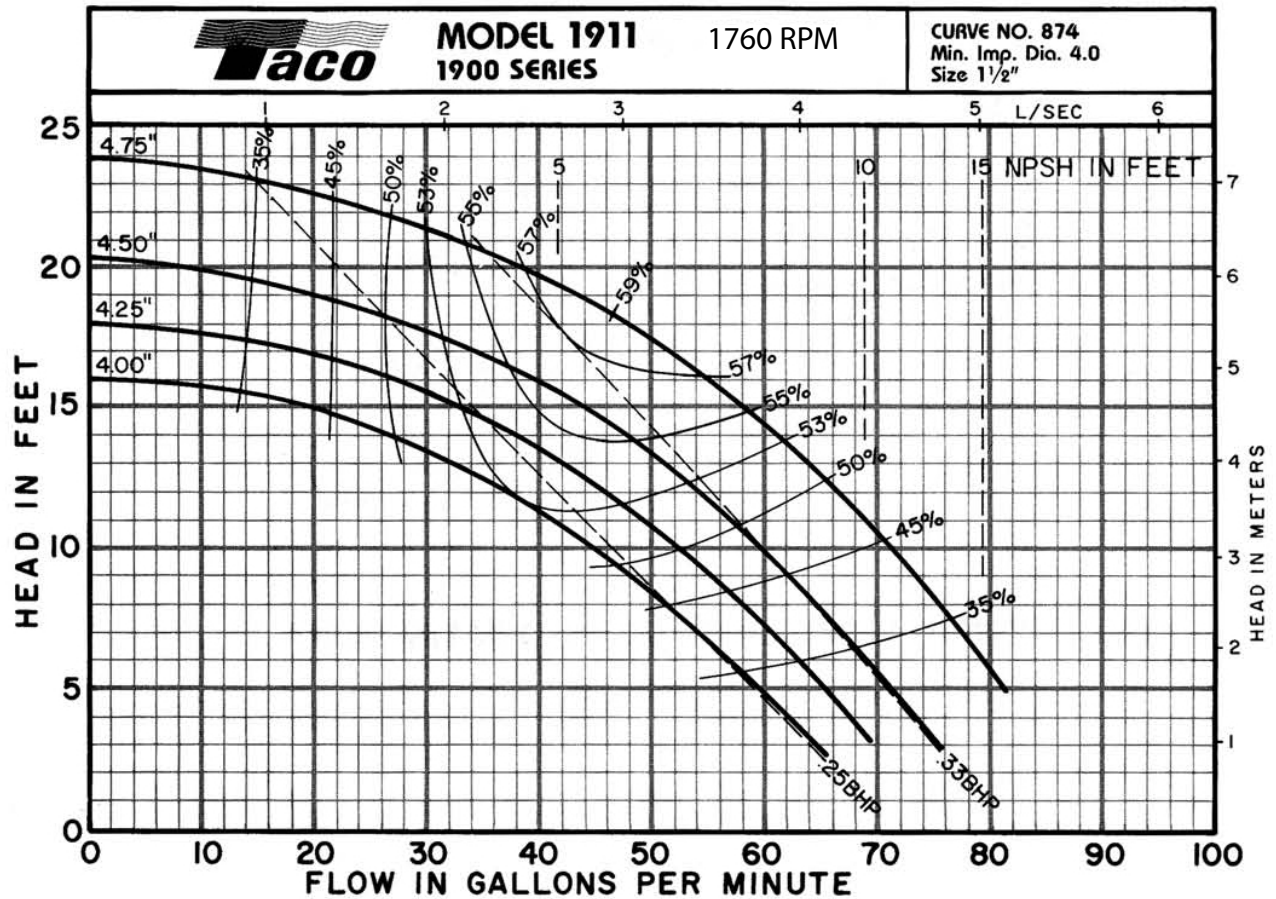
### VARIABLE FREQUENCY DRIVE RECOMMENDATIONS

Pump Turn Down Ratio = 4:1

Recommended Minimum Drive Frequency = 15 Hz

**NOTE:** Pump flanges are tapped for gauges.





## COMMENTS