

## BEARING ASSEMBLY REPLACEMENT INSTRUCTION SHEET

Instructions for any BRG-A, BRG-B, BRG-C or BRG-D Assembly

102-126

SUPERSEDES: September 1, 2004  
Plant ID: 001-3801

EFFECTIVE: July 31, 2007



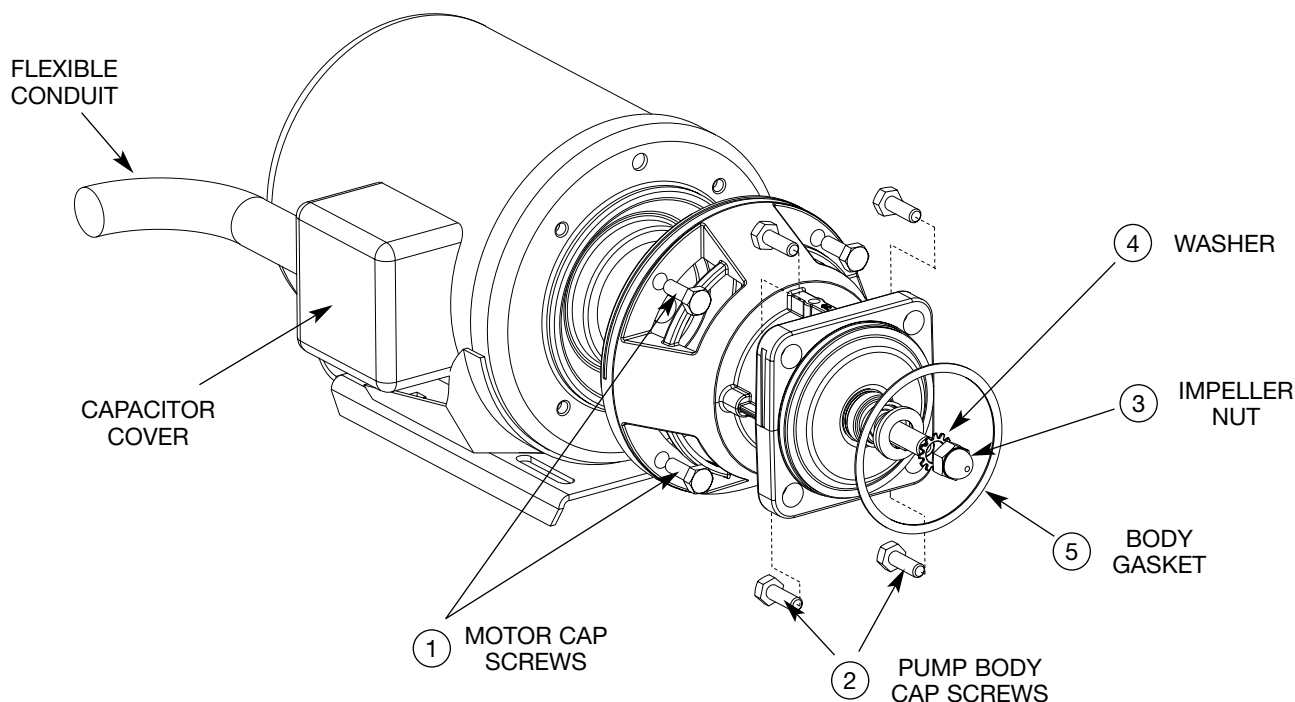
**WARNING:** Before proceeding with any of these instructions, make certain that power is disconnected and locked out. Electrical power to the boiler and any related accessory must also be disconnected and locked out. Failure to follow these instructions could result in injury or death.



**CAUTION:** Check surfaces for high temperatures. Allow the pump/piping temperature to reach approximately 100°F before proceeding. Failure to follow these instructions could result in severe personal injury and/or property damage.




**CAUTION:** Close the valves on the suction and discharge sides of the pump before proceeding. If no valves have been installed, it will be necessary to drain the system. If it becomes necessary to drain the system, close the city water supply or shutoff valve to the pressure reducing valve. Allow the system to cool to approximately 100°F. Open the drain valve (take precautions against water damage) and leave the drain valve open until servicing is completed. Failure to follow these instructions could result in severe personal injury and/or property damage.




1. Close all service shut-off valves on suction & discharge side of pump. If service valves are not available, close the water supply, disconnect power if applicable and drain system. Be sure to follow safety caution instructions above.
2. Disconnect all power to pump and related equipment. Remove capacitor cover and disconnect wire nuts. Remove flexible conduit from capacitor box.
3. Using an Allen wrench, loosen the coupler set screw on the pump shaft end until the coupler moves freely. Do not loosen set screw on motor shaft.
4. Remove the four motor cap screws (item #1) with a box wrench and separate motor from bearing assembly.
5. Loosen the four pump body cap screws (item #2). Shift the bearing assembly slightly to allow any pressurized water to drain. Remove the four pump body cap screws.

6. Remove bearing assembly from pump body.
7. Remove impeller nut and washer (items #3 and #4) and impeller from old bearing assembly. Remove nut, washer and spacer tube from new assembly and re-install impeller. Line up the keyways on impeller and shaft carefully. Tighten nut securely.
8. Remove old body gasket, clean all surfaces thoroughly and install new gasket provided (item #5).
9. Install new Pro-Fit™ bearing assembly on to pump body. Tighten four pump body cap screws evenly. Be sure not to over-tighten.
10. Install motor on bearing assembly bracket. Reconnect coupler to pump shaft, align set screw with dimple on shaft and tighten set screw.
11. Lubricate new bearing assembly, following instructions on oil tube provided in kit.

 **CAUTION:** Bearing assembly is shipped without oil. Be sure to lubricate bearing assembly properly or early failure may result and warranty will be void.

12. Close system drain valve. Open service shut-off valves on pump suction and discharge.
13. Open water supply to refill system and pressurize pump body slowly. Check closely for any leaks.

 **CAUTION:** Pressurize the pump body slowly. Be aware that hot water leaks could occur. Check for leaks at all gasketed joints. Failure to follow these instructions could result in severe personal injury and/or property damage.

14. Reconnect electrical power to pump and related equipment. Check for proper pump operation.

**PERIODIC INSPECTION:** Pro-Fit™ Products are designed to provide years of trouble free service. However, it is recommended that periodic inspections be made to check for proper operation or leakage. If there is any evidence of leakage, repair or replace bearing assembly immediately.

## LIMITED WARRANTY STATEMENT

Taco, Inc. will repair or replace without charge (at the company's option) any product or part which is proven defective under normal use within one (1) year from the date of start-up or one (1) year and six (6) months from date of shipment (whichever occurs first).

In order to obtain service under this warranty, it is the responsibility of the purchaser to promptly notify the local Taco stocking distributor or Taco in writing and promptly deliver the subject product or part, delivery prepaid, to the stocking distributor. For assistance on warranty returns, the purchaser may either contact the local Taco stocking distributor or Taco. If the subject product or part contains no defect as covered in this warranty, the purchaser will be billed for parts and labor charges in effect at time of factory examination and repair.

Any Taco product or part not installed or operated in conformity with Taco instructions or which

has been subject to misuse, misapplication, the addition of petroleum-based fluids or certain chemical additives to the systems, or other abuse, will not be covered by this warranty.

If in doubt as to whether a particular substance is suitable for use with a Taco product or part, or for any application restrictions, consult the applicable Taco instruction sheets or contact Taco at [401-942-8000].

Taco reserves the right to provide replacement products and parts which are substantially similar in design and functionally equivalent to the defective product or part. Taco reserves the right to make changes in details of design, construction, or arrangement of materials of its products without notification.

**TACO OFFERS THIS WARRANTY IN LIEU OF ALL OTHER EXPRESS WARRANTIES. ANY WARRANTY IMPLIED BY LAW INCLUDING WARRANTIES OF MERCHANTABILITY OR**

**FITNESS IS IN EFFECT ONLY FOR THE DURATION OF THE EXPRESS WARRANTY SET FORTH IN THE FIRST PARAGRAPH ABOVE.**

**THE ABOVE WARRANTIES ARE IN LIEU OF ALL OTHER WARRANTIES, EXPRESS OR STATUTORY, OR ANY OTHER WARRANTY OBLIGATION ON THE PART OF TACO.**

**TACO WILL NOT BE LIABLE FOR ANY SPECIAL, INCIDENTAL, INDIRECT OR CONSEQUENTIAL DAMAGES RESULTING FROM THE USE OF ITS PRODUCTS OR ANY INCIDENTAL COSTS OF REMOVING OR REPLACING DEFECTIVE PRODUCTS.**

This warranty gives the purchaser specific rights, and the purchaser may have other rights which vary from state to state. Some states do not allow limitations on how long an implied warranty lasts or on the exclusion of incidental or consequential damages, so these limitations or exclusions may not apply to you.



**Taco Comfort Solutions™** A Taco Group Company

Taco, Inc., 1160 Cranston Street, Cranston, RI 02920 | Tel: (401) 942-8000 | FAX: (401) 942-2360

Taco (Canada), Ltd., 8450 Lawson Road, Suite #3, Milton, Ontario L9T 0J8 | Tel: (905) 564-9422 | FAX: (905) 564-9436

Visit our web site: [www.TacoComfort.com](http://www.TacoComfort.com) | Printed in USA | ©2015 Taco, Inc.

