



Instruction Sheet In-Line Heat-Gard™ Cartridge Changer

100-3.4D

SUPERSEDES: 100-3.4D April 15, 1983

EFFECTIVE: August 1, 1997

Plant ID#: 001-1004

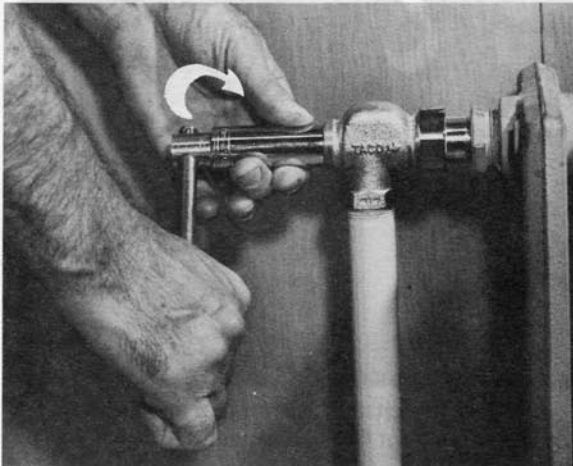
Cartridge Changer	Current Valve Bodies That Changer Works With		Discontinued Valve Bodies That Changer Works With			
	1/2"	3/4"	1/2"	3/4"	1"	1 1/4"
5216-1	5321-C1	5331-C1	5221-C1	5231-C1	5241-1	5251-1
	5321-1	5331-1	5221-1	5231-1	5242-1	5252-1
	5322-1	5332-1	5222-1	5232-1	5243-1	5253-1
	5323-1	5333-1	5223-1	5233-1		
		5234-1	5227-1	5237-1		
			5228-1	5239-1		
			5229-1			

Purpose:

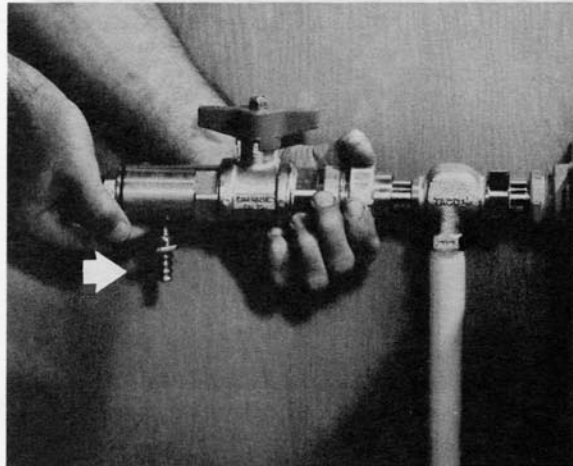
When new valves are installed, particles of dirt, rust or scale sometimes get lodged on the valve disc. The in-line cartridge changer tool permits removing the cartridge for repair or replacement without shutting down a hot water or low pressure steam heating system.

Procedure:

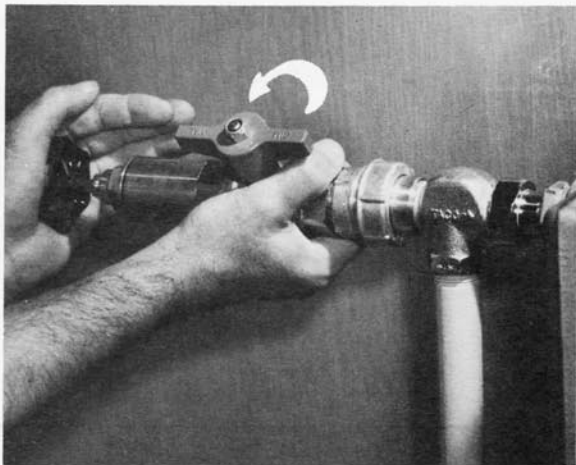
Follow the easy steps under the photographs. Reverse the procedure when re-installing the cartridge.



1. Using a 6 point $\frac{3}{4}$ " socket wrench, *loosen* the cartridge in the valve body by turning counterclockwise to break the metal to metal seal. *Do not* turn the cartridge out. Turn it back clockwise, tighten it lightly, if needed to prevent any objectionable leakage.



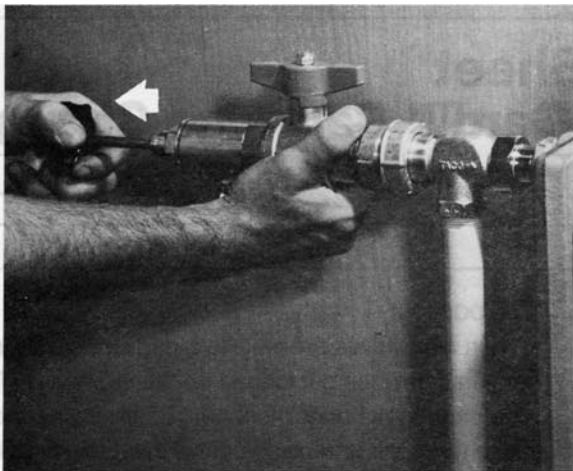
2. Place the hex socket of the cartridge changer onto the hex of the valve cartridge. Press in the stem handle of the tool to ensure a firm engagement.



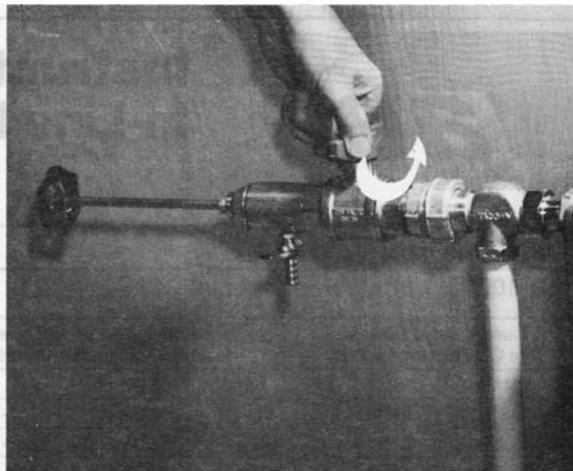
3. While continuing to press in on the stem handle, engage the thread of the union tailpiece of the changer with the thread on the neck of the valve. Turn the changer onto the valve neck until it is firmly in place and sealed.



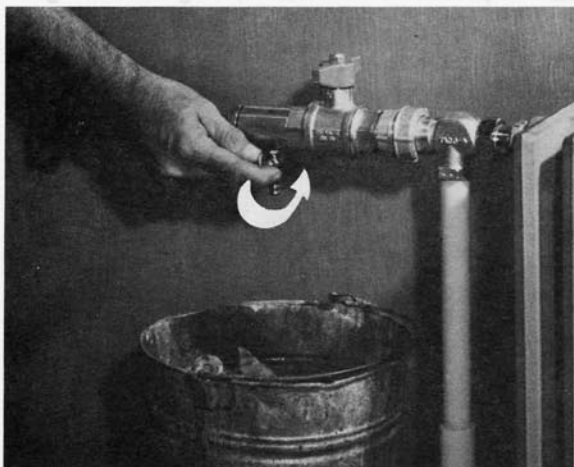
4. Check that the drain cock is closed and that the bonnet of the outer chamber of the changer is assembled securely. Turn the changer handle counterclockwise at *least 3 full turns* to ensure that the cartridge is free.



5. Pull out on the changer handle to clear the ball valve.



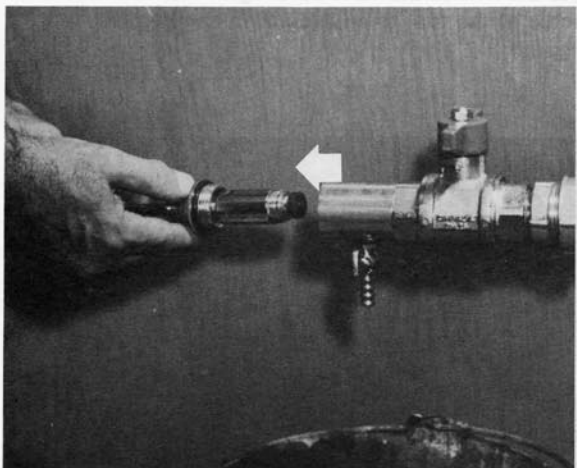
6. Close the ball valve by turning its handle so that it is across the axis of the changer.



7. Open the drain cock to relieve water or steam pressure in the chamber.



8. Holding the changer so that it does not turn, turn the bonnet out of the chamber.



9. Remove the cartridge and repair or replace it.

COMPARE. YOU'LL TAKE TACO.

TACO, INC., 1160 Cranston Street, Cranston, RI 02920 Telephone: (401) 942-8000 FAX: (401) 942-2360.

TACO (Canada), Ltd., 6180 Ordan Drive, Mississauga, Ontario L5T 2B3. Telephone: 905/564-9422. FAX: 905/564-9436.

Visit our web site at: <http://www.taco-hvac.com>

Printed in USA

Copyright 1997

TACO, Inc.