



INSTRUCTION SHEET

NUMBER

IS 100-3.2C

Plant ID No. 001-304

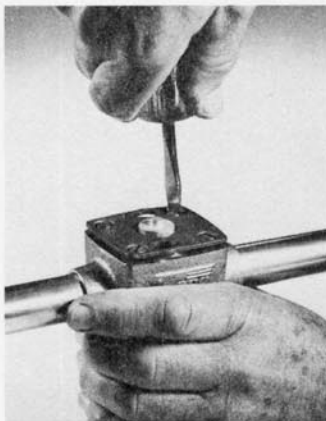
Effective: June 1, 1983
Supersedes: IS100-3.2C
dated 1/15/83

REPLACING ZONE VALVE SEAT ASSEMBLY

**MODELS 555-1/2", 556-3/4", 557-1",
560-1/2", 561-3/4", 562-1",
570-1/2", 571-3/4", 572-1", 573-1 1/4"
ZONE VALVES**



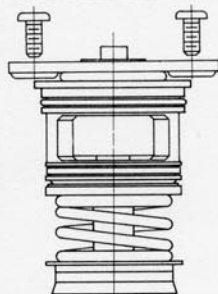
1—Twist off Power Head



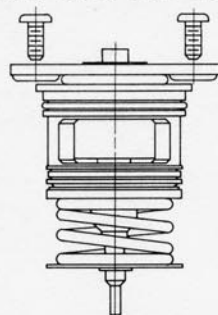
2—Remove the 4 Screws
from hold down plate



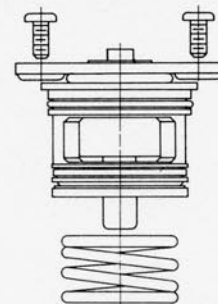
3—Remove seat assembly



Models 555, 556 & 557



Models 560, 561 & 562



Models 571, 572 & 573

TO REMOVE SEAT ASSEMBLY

- STEP 1 — Disconnect No. 1 wire from Power Head and close isolation valves if used, otherwise create a vacuum or drain system.
- STEP 2 — Follow above illustrations from left to right. *(Do not remove power head until it has cooled for at least 2 minutes.)*

TO RE-ASSEMBLE

Models 555, 556 & 557

- STEP 3 — Place new assembly in body and gently rotate until rubber cup drops into place. At this point wide flange of assembly will be approximately 1/8" above top of body.
- DO NOT FORCE INTO PLACE.

Models 560, 561 & 562

Place new assembly into body as straight as possible until the wide flange of the assembly is about 1/4" above top of body.

Models 571, 572 & 573

Place spring into body first, then the new assembly. The wide flange will extend about 1/2" above top of body.

All Models

- STEP 4 — Press hold down plate evenly on assembly until you can engage the threads of all four (4) screws and tighten evenly until plate fits flush with top of body. Countersinks in plate should face up.
- STEP 5 — Open isolation valves if used or re-fill system, test for leaks, then twist Power Head into place, set thermostat to desired position and test operation of valve.